

Recombinant Human CD7 Protein, His-tagged

Cat. No. CD7-697H Lot. No. (See product label)

SPECIFICATION

Product Overview	Recombinant Human CD7 Protein (Ala26-Pro180) with His tag was expressed in E. coli.
Species	Human
Source	E.coli
ProteinLength	Ala26-Pro180
Description	This gene encodes a transmembrane protein which is a member of the immunoglobulin superfamily. This protein is found on thymocytes and mature T cells. It plays an essential role in T-cell interactions and also in T-cell/B-cell interaction during early lymphoid development.
Form	Freeze-dried powder
Molecular Mass	Predicted Molecular Mass: 20.1 kDa; Accurate Molecular Mass: 25 kDa
Purity	> 95%
Applications	Positive Control; Immunogen; SDS-PAGE; WB.
Stability	The thermal stability is described by the loss rate. The loss rate was determined by accelerated thermal degradation test, that is, incubate the protein at 37 centigrade for 48h, and no obvious degradation and precipitation were observed. The loss rate is

 Tel: 1-631-559-9269 1-516-512-3133

 Email: info@creative-biomart.com  Fax: 1-631-938-8127

 45-1 Ramsey Road, Shirley, NY 11967, USA

less than 5% within the expiration date under appropriate storage condition.

Storage

Avoid repeated freeze/thaw cycles. Store at 2-8 centigrade for one month. Aliquot and store at -80 centigrade for 12 months.

Storage Buffer

20mM Tris, 150mM NaCl, pH8.0, containing 1mM EDTA, 1mM DTT, 0.01% SKL, 5% Trehalose and Proclin300.

Reconstitution

Reconstitute in 20mM Tris, 150mM NaCl (pH8.0) to a concentration of 0.1-1.0 mg/mL. Do not vortex.

GENE INFORMATION

Gene Name

CD7 CD7 molecule [*Homo sapiens (human)*]

Official Symbol

CD7

Synonyms

CD7; CD7 molecule; CD7 antigen (p41); T-cell antigen CD7; GP40; LEU 9; p41 protein; T cell antigen CD7; T cell leukemia antigen; Tp40; TP41; T-cell leukemia antigen; T-cell surface antigen Leu-9; LEU-9;

Gene ID

924

mRNA Refseq

NM_006137

Protein Refseq

NP_006128

MIM

186820

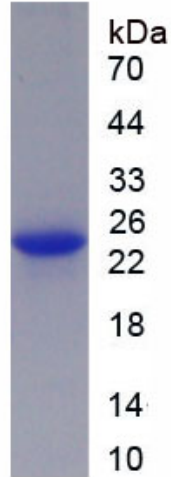
UniProt ID

P09564

 Tel: 1-631-559-9269 1-516-512-3133

 Email: info@creative-biomart.com  Fax: 1-631-938-8127

 45-1 Ramsey Road, Shirley, NY 11967, USA



Tel: 1-631-559-9269 1-516-512-3133

Email: info@creative-biomart.com Fax: 1-631-938-8127

45-1 Ramsey Road, Shirley, NY 11967, USA