

## Active Recombinant Human CD70, hFc-tagged

Cat. No. CD70-073H Lot. No. (See product label)

### SPECIFICATION

<b>Product Overview</b>	Recombinant Human CD70(Ser52-Pro193), fused with hFc tag, was expressed in HEK293.
<b>Species</b>	Human
<b>Source</b>	HEK293
<b>ProteinLength</b>	Ser52-Pro193
<b>Form</b>	Lyophilized from 0.22 µm filtered solution in PBS, pH7.4.
<b>Bio-activity</b>	When Recombinant Human CD70/ hFC Protein is immobilized at 5g/mL (100 µ/well), the concentration of Anti-Human CD70 (Cusatuzumab) that produces 50% of the optimal binding response is approximately 20 ng/ml.
<b>Molecular Mass</b>	The protein has a calculated MW of 73kDa. The non-reducing (N-R) heterodimer protein migrates as 140-160 kDa due to glycosylation
<b>Endotoxin</b>	<1EU/mg
<b>Purity</b>	SDS-PAGE>95%SEC>90%
<b>Storage</b>	Store at -20°C.
<b>Reconstitution</b>	It is recommended that sterile water be added to the vial to prepare a stock solution of

 Tel: 1-631-559-9269 1-516-512-3133

 Email: [info@creative-biomart.com](mailto:info@creative-biomart.com)  Fax: 1-631-938-8127

 45-1 Ramsey Road, Shirley, NY 11967, USA

0.2 ug/ul. Centrifuge the vial at 4°C before opening to recover the entire contents.

## GENE INFORMATION

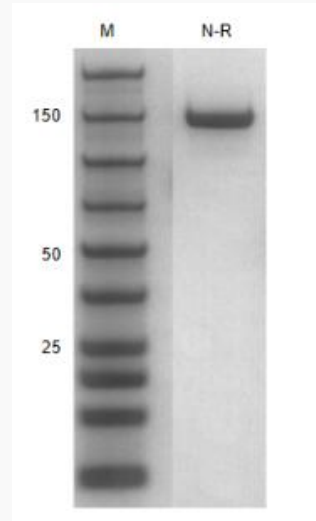
<b>Gene Name</b>	CD70 CD70 molecule [ Homo sapiens ]
<b>Official Symbol</b>	CD70
<b>Synonyms</b>	CD70; CD70 molecule; CD27LG, TNFSF7, tumor necrosis factor (ligand) superfamily, member 7; CD70 antigen; CD27L; CD27-L; CD27 ligand; Ki-24 antigen; surface antigen CD70; tumor necrosis factor ligand superfamily member 7; tumor necrosis factor (ligand) superfamily, member 7; CD27LG; TNFSF7;
<b>Gene ID</b>	970
<b>mRNA Refseq</b>	NM_001252
<b>Protein Refseq</b>	NP_001243
<b>MIM</b>	602840
<b>UniProt ID</b>	P32970

 Tel: 1-631-559-9269 1-516-512-3133

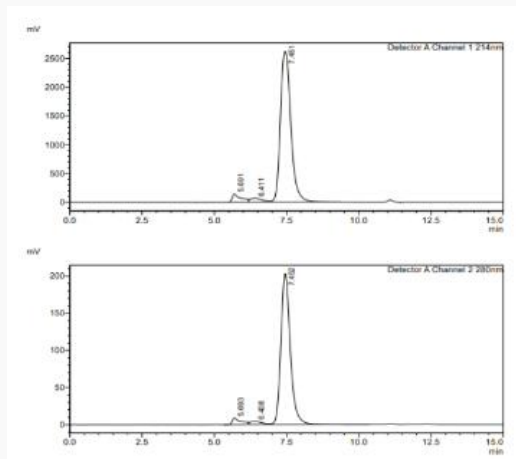
 Email: [info@creative-biomart.com](mailto:info@creative-biomart.com)  Fax: 1-631-938-8127

 45-1 Ramsey Road, Shirley, NY 11967, USA

**SDS-PAGE**



**SDS-HPLC**



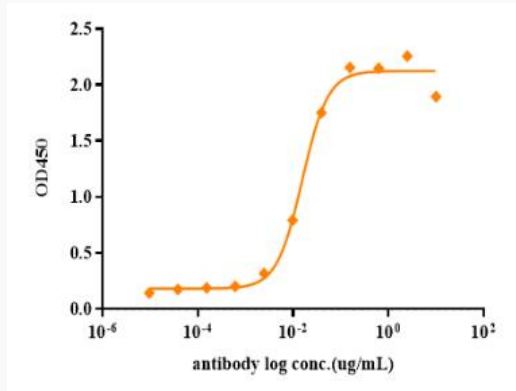
 Tel: 1-631-559-9269 1-516-512-3133

 Email: [info@creative-biomart.com](mailto:info@creative-biomart.com)  Fax: 1-631-938-8127

 45-1 Ramsey Road, Shirley, NY 11967, USA



ELISA



Tel: 1-631-559-9269 1-516-512-3133

Email: [info@creative-biomart.com](mailto:info@creative-biomart.com) Fax: 1-631-938-8127

45-1 Ramsey Road, Shirley, NY 11967, USA