

## Recombinant Human CD70 protein, His-tagged

Cat. No. CD70-196H Lot. No. (See product label)

### SPECIFICATION

<b>Product Overview</b>	Recombinant Human CD70 protein(P32970-1)(Leu50-Pro193), fused with N-terminal His tag, was expressed in HEK293.
<b>Species</b>	Human
<b>Source</b>	HEK293
<b>ProteinLength</b>	Leu50-Pro193
<b>Tag</b>	N-His
<b>Form</b>	Lyophilized from 0.22µm filtered solution in PBS (pH 7.4). Normally 5% trehalose is added as protectant before lyophilization.
<b>Bio-activity</b>	Immobilized Human CD27 Ligand Trimer, His Tag at 2ug/ml (100ul/Well) on the plate. Dose response curve for Human CD27, hFc Tag with the EC50 of 13.5ng/ml determined by ELISA.
<b>Molecular Mass</b>	The protein has a predicted MW of 51.8 kDa. Due to glycosylation, the protein migrates to 62-65 kDa based on Tris-Bis PAGE result.
<b>Endotoxin</b>	Less than 1EU per µg by the LAL method.
<b>Purity</b>	> 95% as determined by Tris-Bis PAGE;> 95% as determined by HPLC

 Tel: 1-631-559-9269 1-516-512-3133

 Email: [info@creative-biomart.com](mailto:info@creative-biomart.com)  Fax: 1-631-938-8127

 45-1 Ramsey Road, Shirley, NY 11967, USA

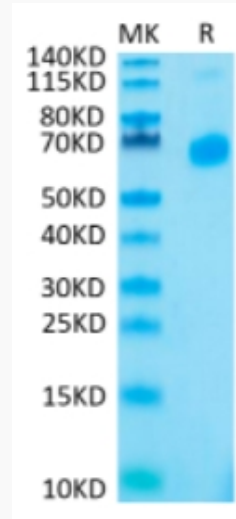
<b>Storage</b>	Reconstituted protein stable at -80°C for 12 months, 4°C for 1 week. Use a manual defrost freezer and avoid repeated freeze-thaw cycles.
<b>Reconstitution</b>	Centrifuge tubes before opening. Reconstituting to a concentration more than 100 µg/ml is recommended. Dissolve the lyophilized protein in distilled water.
<b>GENE INFORMATION</b>	
<b>Gene Name</b>	CD70 CD70 molecule [ Homo sapiens ]
<b>Official Symbol</b>	CD70
<b>Synonyms</b>	CD70; CD70 molecule; CD27LG, TNFSF7, tumor necrosis factor (ligand) superfamily, member 7; CD70 antigen; CD27L; CD27-L; CD27 ligand; Ki-24 antigen; surface antigen CD70; tumor necrosis factor ligand superfamily member 7; tumor necrosis factor (ligand) superfamily, member 7; CD27LG; TNFSF7;
<b>Gene ID</b>	970
<b>mRNA Refseq</b>	NM_001252
<b>Protein Refseq</b>	NP_001243
<b>MIM</b>	602840
<b>UniProt ID</b>	P32970

 Tel: 1-631-559-9269 1-516-512-3133

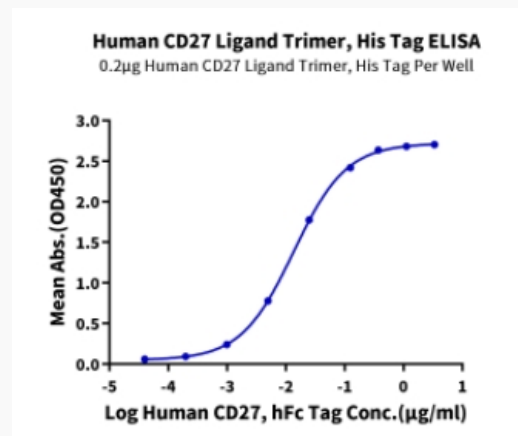
 Email: [info@creative-biomart.com](mailto:info@creative-biomart.com)  Fax: 1-631-938-8127

 45-1 Ramsey Road, Shirley, NY 11967, USA

**Tris-Bis PAGE**



**ELISA Data**



 Tel: 1-631-559-9269 1-516-512-3133

 Email: [info@creative-biomart.com](mailto:info@creative-biomart.com)  Fax: 1-631-938-8127

 45-1 Ramsey Road, Shirley, NY 11967, USA