

## Recombinant Human CD79A Protein (His36-Gly219), N-His tagged

Cat. No. CD79A-1444H Lot. No. (See product label)

### SPECIFICATION

<b>Product Overview</b>	Recombinant Human CD79a/CD79A (His36-Gly219) fused with the N-His tag was expressed in E. coli.
<b>Species</b>	Human
<b>Source</b>	E.coli
<b>ProteinLength</b>	His36-Gly219
<b>Form</b>	Lyophilized powder/frozen liquid
<b>Molecular Mass</b>	22.91 kDa
<b>Purity</b>	>90% as determined by SDS-PAGE.
<b>Notes</b>	For research use only.
<b>Storage</b>	Use a manual defrost freezer and avoid repeated freeze thaw cycles. Store at 2 to 8 centigrade for one week. Store at -20 to -80 centigrade for twelve months from the date of receipt.
<b>Storage Buffer</b>	0.01M PBS, pH 7.4, 0.02% NLS
<b>Reconstitution</b>	Reconstitute in sterile water for a stock solution.

 Tel: 1-631-559-9269 1-516-512-3133

 Email: [info@creative-biomart.com](mailto:info@creative-biomart.com)  Fax: 1-631-938-8127

 45-1 Ramsey Road, Shirley, NY 11967, USA

**Shipping**

They are shipped out with dry ice/blue ice unless customers require otherwise.

**GENE INFORMATION**

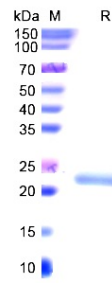
<b>Gene Name</b>	CD79A CD79a molecule, immunoglobulin-associated alpha [ Homo sapiens (human) ]
<b>Official Symbol</b>	CD79A
<b>Synonyms</b>	CD79A; CD79a molecule, immunoglobulin-associated alpha; CD79A antigen (immunoglobulin associated alpha), IGA; B-cell antigen receptor complex-associated protein alpha chain; MB 1; ig-alpha; MB-1 membrane glycoprotein; surface IgM-associated protein; CD79a antigen (immunoglobulin-associated alpha); membrane-bound immunoglobulin-associated protein; IGA; MB-1;
<b>Gene ID</b>	973
<b>mRNA Refseq</b>	NM_001783
<b>Protein Refseq</b>	NP_001774
<b>MIM</b>	112205
<b>UniProt ID</b>	P11912

 Tel: 1-631-559-9269 1-516-512-3133

 Email: [info@creative-biomart.com](mailto:info@creative-biomart.com)  Fax: 1-631-938-8127

 45-1 Ramsey Road, Shirley, NY 11967, USA

**SDS-PAGE**



 Tel: 1-631-559-9269 1-516-512-3133

 Email: [info@creative-biomart.com](mailto:info@creative-biomart.com)  Fax: 1-631-938-8127

 45-1 Ramsey Road, Shirley, NY 11967, USA