

# Buffy Coat REAlease CD8 protein-coupled magnetic MicroBeads

Cat. No. CD8-3291M Lot. No. (See product label)

## SPECIFICATION

**Species** Human

**Capacity** for 1 buffy coat

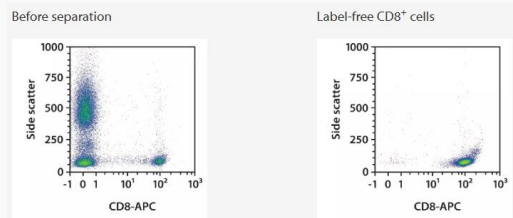
**Background**

The CD8 antigen forms a complex together with the T cell receptor and acts as an accessory molecule in the recognition of MHC class I/peptide complexes by the TCR heterodimer on CD8+ cytotoxic T cells. The CD8 molecule consists of either an  $\alpha/\beta$  heterodimer or an  $\alpha/\alpha$  homodimer. It is expressed strongly on cytotoxic T cells and dimly on a subset of NK cells. CD8 is found on most thymocytes and on about one third of all peripheral blood T cells. CD8+ cytotoxic T cells play an important role in the killing of virus-infected cells and tumor cells.

**Application**

The purified CD8+ cells are bead-free, practical for consecutive magnetic isolation and optionally label-free with epitopes available for any downstream application. The isolated cells are suited for further flow cytometric analyses, molecular biology applications, and functional studies.

**Cell purity**



Tel: 1-631-559-9269 1-516-512-3133

Email: [info@creative-biomart.com](mailto:info@creative-biomart.com) Fax: 1-631-938-8127

45-1 Ramsey Road, Shirley, NY 11967, USA



CD8+ cells were isolated from a complete buffy coat using the StraightFrom Buffy Coat REAlease CD8 MicroBead Kit, Whole Blood Columns, and a MultiMACS Cell24 Separator Plus with the Single-Column Adapter. Cells were fluorescently stained with REAfinity Antibodies CD8-APC and analyzed by flow cytometry using the MACSQuant Analyzer X. Cell debris and dead cells were excluded from the analysis based on scatter signals and propidium iodide fluorescence.

 Tel: 1-631-559-9269 1-516-512-3133

 Email: [info@creative-biomart.com](mailto:info@creative-biomart.com)  Fax: 1-631-938-8127

 45-1 Ramsey Road, Shirley, NY 11967, USA