

## CD8 protein-coupled magnetic NanoBeads

Cat. No. CD8-3911M Lot. No. (See product label)

### SPECIFICATION

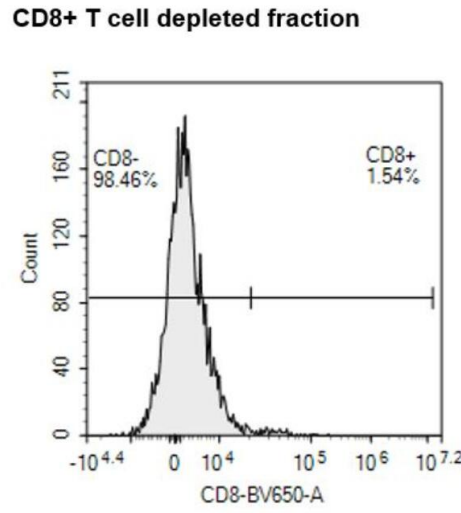
<b>Species</b>	Human
<b>Beads Size</b>	500 $\mu$
<b>Capacity</b>	For $5 \times 10^8$ total MNCs
<b>Formulation</b>	Supplied in buffer containing stabilizer
<b>Application</b>	Positive selection or depletion of CD8+ T cells from leukapheresis, PBMC or cell cultures. Isolated CD8+ T cells can be used for culture and expansion, flow cytometry, T cells functional assays such as cytokine production cytotoxicity, coculture experiments of CD8+ T cells with dendritic cells or B cells for evaluation of the activation of antigen-presenting cells, and translational research.
<b>Storage</b>	Nanobeads conjugated to monoclonal mouse anti-human CD8 antibodies (isotype: mouse IgG1) under optimal conditions.

 Tel: 1-631-559-9269 1-516-512-3133

 Email: [info@creative-biomart.com](mailto:info@creative-biomart.com)  Fax: 1-631-938-8127

 45-1 Ramsey Road, Shirley, NY 11967, USA

Analysis



 Tel: 1-631-559-9269 1-516-512-3133

 Email: [info@creative-biomart.com](mailto:info@creative-biomart.com)  Fax: 1-631-938-8127

 45-1 Ramsey Road, Shirley, NY 11967, USA