

Buffy Coat CD8 protein-coupled magnetic MicroBeads

Cat. No. CD8-532M Lot. No. (See product label)

SPECIFICATION

Species Human

Capacity for 1 buffy coat

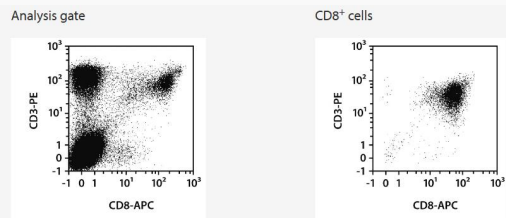
Background

In blood the CD8 antigen is expressed on human cytotoxic T cells and on a subset of CD16+ NK cells. The CD8 antigen acts as an accessory molecule in the recognition of MHC class I/peptide complexes by the TCR heterodimer on CD8+ cytotoxic T cells.

Application

The purified CD8+ cells are well-suited for further flow cytometric, functional, or molecular analysis.

Analysis



Separation of a buffy coat sample using the StraightFrom Buffy Coat CD8 MicroBead Kit and the MultiMACS Cell24 Separator Plus with the Single-Column Adapter and Whole Blood Columns. Cells were fluorescently stained with CD3-PE, CD8-APC, as well as CD45-VioBlue and analyzed by flow cytometry using the MACSQuant Analyzer. Cells were triggered via CD45-VioBlue, cell debris and dead cells were excluded from the analysis based on scatter signals and propidium iodide fluorescence.

Tel: 1-631-559-9269 1-516-512-3133

Email: info@creative-biomart.com Fax: 1-631-938-8127

45-1 Ramsey Road, Shirley, NY 11967, USA