

# Whole Blood REAlease CD8 protein-coupled magnetic MicroBeads

**Cat. No.** CD8-6428M    **Lot. No.** (See product label)

## SPECIFICATION

**Species** Human

**Capacity** for 40 mL whole blood

### Background

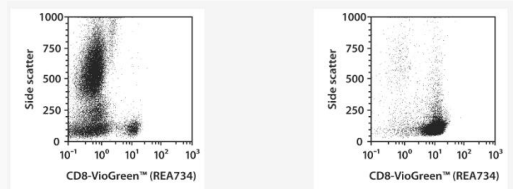
StraightFrom Whole Blood REAlease CD8 MicroBead Kit was developed for rapid positive selection of CD8+ cells directly from whole blood. No sample preparation is required, including density gradient centrifugation or erythrocyte lysis.

The purified target cells are bead-free, practical for consecutive magnetic isolations, and can be label-free so that epitopes are available for any downstream application.

### Application

StraightFrom Whole Blood REAlease CD8 MicroBead Kit allows the fast isolation of CD8+ cells directly from blood thus minimizing hands-on time and maximizing yields of target cells. The purified CD8+ cells are well-suited for further flow cytometric, functional, or molecular analysis. The isolated CD8+ cell subset is label-free.

### Analysis



CD8+ cells were isolated from whole blood using the StraightFrom Whole Blood REAlease CD8 MicroBead Kit, human and Whole Blood Columns. Cells were fluorescently stained with the REAfinity Antibody CD8-FITC and analyzed by flow

 Tel: 1-631-559-9269    1-516-512-3133

 Email: [info@creative-biomart.com](mailto:info@creative-biomart.com)     Fax: 1-631-938-8127

 45-1 Ramsey Road, Shirley, NY 11967, USA



cytometry using the MACSQuant Analyzer X. Cell debris and dead cells were excluded from the analysis based on scatter signals and propidium iodide fluorescence.

 Tel: 1-631-559-9269 1-516-512-3133

 Email: [info@creative-biomart.com](mailto:info@creative-biomart.com)  Fax: 1-631-938-8127

 45-1 Ramsey Road, Shirley, NY 11967, USA