

Recombinant Human CD80 Protein, GST-Tagged

Cat. No. CD80-0864H **Lot. No.** (See product label)

SPECIFICATION

Product Overview	Human CD80 full-length ORF (AAH42665, 35 a.a. - 288 a.a.) recombinant protein with GST-tag at N-terminal.
Species	Human
Source	Wheat Germ
Description	The protein encoded by this gene is a membrane receptor that is activated by the binding of CD28 or CTLA-4. The activated protein induces T-cell proliferation and cytokine production. This protein can act as a receptor for adenovirus subgroup B and may play a role in lupus neuropathy. [provided by RefSeq, Aug 2011]
Molecular Mass	53.68 kDa
AA Sequence	VIHVTKEVKEVATLSCGHNVSV EELAQTRIWQKEKKMVLTMMSGDMNIWPEYKNR TIFDITNNLSIVILALRPSDEGTYECVVLKYEKDAFKREHLAEVTL SVKADFPTPSISDF EIPTSNIRRIICSTSGGFPEPHLSWLENGEELNAINTTVSQDPETELYAVSSKLDNFMT TNHSFMCLIKYGHLRVNQT FNWNTTKQEHFPDNL LPSWAITLISVNGIFVICCLTYCF APRCRERRRRNERLRRESVRPV
Applications	Enzyme-linked Immunoabsorbent Assay Western Blot (Recombinant protein) Antibody Production Protein Array

 Tel: 1-631-559-9269 1-516-512-3133

 Email: info@creative-biomart.com  Fax: 1-631-938-8127

 45-1 Ramsey Road, Shirley, NY 11967, USA

Storage Store at -80 centigrade. Aliquot to avoid repeated freezing and thawing.

Storage Buffer 50 mM Tris-HCl, 10 mM reduced Glutathione, pH=8.0 in the elution buffer.

GENE INFORMATION

Gene Name [CD80 CD80 molecule \[Homo sapiens \]](#)

Official Symbol [CD80](#)

Synonyms

CD80; CD80 molecule; CD28LG, CD28LG1, CD80 antigen (CD28 antigen ligand 1, B7 1 antigen), CD80 molecule; T-lymphocyte activation antigen CD80; B lymphocyte activation antigen B7; B7 1; B7.1; activation B7-1 antigen; costimulatory factor CD80; CTLA-4 counter-receptor B7.1; B-lymphocyte activation antigen B7; costimulatory molecule variant IgV-CD80; CD80 antigen (CD28 antigen ligand 1, B7-1 antigen); B7; BB1; B7-1; LAB7; CD28LG; CD28LG1;

Gene ID [941](#)

mRNA Refseq [NM_005191](#)

Protein Refseq [NP_005182](#)

MIM [112203](#)

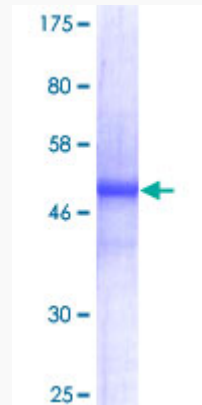
UniProt ID [P33681](#)

 Tel: 1-631-559-9269 1-516-512-3133

 Email: info@creative-biomart.com  Fax: 1-631-938-8127

 45-1 Ramsey Road, Shirley, NY 11967, USA

**Quality Control
Testing**



12.5% SDS-PAGE Stained with Coomassie Blue.

 Tel: 1-631-559-9269 1-516-512-3133

 Email: info@creative-biomart.com  Fax: 1-631-938-8127

 45-1 Ramsey Road, Shirley, NY 11967, USA