

Recombinant Full Length Human CD80 Protein, C-Flag-tagged

Cat. No. CD80-1232HFL Lot. No. (See product label)

SPECIFICATION

Product Overview	Recombinant Full Length Human CD80 Protein, fused to Flag-tag at C-terminus, was expressed in Mammalian cells.
Species	Human
Source	Mammalian Cells
Description	The protein encoded by this gene is a membrane receptor that is activated by the binding of CD28 or CTLA-4. The activated protein induces T-cell proliferation and cytokine production. This protein can act as a receptor for adenovirus subgroup B and may play a role in lupus neuropathy.
Form	25 mM Tris HCl, pH 7.3, 100 mM glycine, 10% glycerol.
Molecular Mass	29.3 kDa
AA Sequence	MGHTRRQGTSPSKCPYLNFFQLLVLAGLSHFCSGVIHVTKVKEVATLSCGHNVSV EELAQTRIWQKEK KMLVTMMMSGDMNIWPEYKNRTIFDITNNLSIVILALRPSDEGTY ECVVLKYEKDAFKREHLAEVTLVKA DFPTPSISDFEIPTSNIRRIICSTSGGFPEPHL SWLENGEELNAINTTVSQDPETELYAVSSKLDNFMTT NHFSMCLIKYGHLRVNQTF NWNTTKQEHFPDNLPSWAITLISVNGIFVICCLTYCFAPRCRERRRNERL RRESVRPVTRTRPLEQKLISEEDLAANDILDYKDDDDKV
Purity	> 80% as determined by SDS-PAGE and Coomassie blue staining.

 Tel: 1-631-559-9269 1-516-512-3133

 Email: info@creative-biomart.com  Fax: 1-631-938-8127

 45-1 Ramsey Road, Shirley, NY 11967, USA

Stability	Stable for 12 months from the date of receipt of the product under proper storage and handling conditions. Avoid repeated freeze-thaw cycles.
Storage	Store at -80 centigrade.
Concentration	>50 ug/mL as determined by microplate BCA method.
Preparation	Recombinant protein was captured through anti-DDK affinity column followed by conventional chromatography steps.
Protein Families	Druggable Genome, Transcription Factors, Transmembrane
Protein Pathways	Allograft rejection, Autoimmune thyroid disease, Cell adhesion molecules (CAMs), Graft-versus-host disease, Systemic lupus erythematosus, Toll-like receptor signaling pathway, Type I diabetes mellitus, Viral myocarditis
Full Length	Full L.

GENE INFORMATION

Gene Name	CD80 CD80 molecule [Homo sapiens (human)]
Official Symbol	CD80
Synonyms	B7; BB1; B7-1; B7.1; LAB7; CD28LG; CD28LG1
Gene ID	941
mRNA Refseq	NM_005191.4
Protein Refseq	NP_005182.1

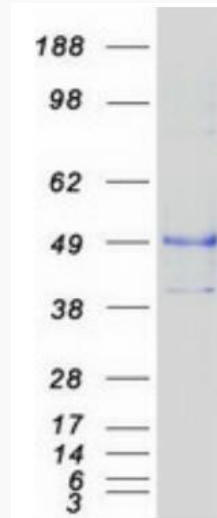
 Tel: 1-631-559-9269 1-516-512-3133

 Email: info@creative-biomart.com  Fax: 1-631-938-8127

 45-1 Ramsey Road, Shirley, NY 11967, USA

MIM 112203

UniProt ID P33681



Coomassie blue staining of purified CD80 protein.

 Tel: 1-631-559-9269 1-516-512-3133

 Email: info@creative-biomart.com  Fax: 1-631-938-8127

 45-1 Ramsey Road, Shirley, NY 11967, USA