

Recombinant Human CD80 protein, His-Avi-tagged

Cat. No. CD80-190H Lot. No. (See product label)

SPECIFICATION

Product Overview	Recombinant Human CD80 protein(P33681-1)(Val35-Asn242), fused with C-terminal His and Avi tag, was expressed in HEK293.
Species	Human
Source	HEK293
ProteinLength	Val35-Asn242
Tag	C-His-Avi
Form	Lyophilized from 0.22µm filtered solution in PBS (pH 7.4). Normally 5% trehalose is added as protectant before lyophilization.
Bio-activity	Immobilized Human CTLA-4, hFc Tag at 1µg/ml (100µl/well) on the plate. Dose response curve for Human B7-1, His Tag with the EC50 of 1.48µg/ml determined by ELISA.
Molecular Mass	The protein has a predicted MW of 26.8 kDa. Due to glycosylation, the protein migrates to 50-70 kDa based on Tris-Bis PAGE result.
Endotoxin	Less than 1EU per µg by the LAL method.
Purity	> 95% as determined by Tris-Bis PAGE; > 95% as determined by HPLC

 Tel: 1-631-559-9269 1-516-512-3133

 Email: info@creative-biomart.com  Fax: 1-631-938-8127

 45-1 Ramsey Road, Shirley, NY 11967, USA

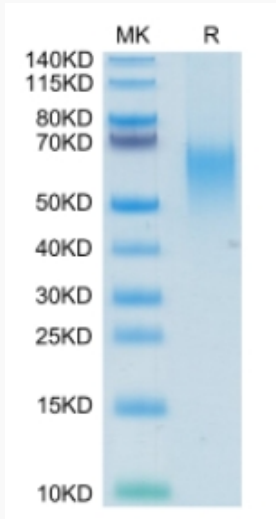
Storage	Reconstituted protein stable at -80°C for 12 months, 4°C for 1 week. Use a manual defrost freezer and avoid repeated freeze-thaw cycles.
Reconstitution	Centrifuge tubes before opening. Reconstituting to a concentration more than 100 µg/ml is recommended. Dissolve the lyophilized protein in distilled water.
GENE INFORMATION	
Gene Name	CD80 CD80 molecule [Homo sapiens]
Official Symbol	CD80
Synonyms	CD80; CD80 molecule; CD28LG, CD28LG1, CD80 antigen (CD28 antigen ligand 1, B7 1 antigen) , CD80 molecule; T-lymphocyte activation antigen CD80; B lymphocyte activation antigen B7; B7 1; B7.1; activation B7-1 antigen; costimulatory factor CD80; CTLA-4 counter-receptor B7.1; B-lymphocyte activation antigen B7; costimulatory molecule variant IgV-CD80; CD80 antigen (CD28 antigen ligand 1, B7-1 antigen); B7; BB1; B7-1; LAB7; CD28LG; CD28LG1;
Gene ID	941
mRNA Refseq	NM_005191
Protein Refseq	NP_005182
MIM	112203
UniProt ID	P33681

 Tel: 1-631-559-9269 1-516-512-3133

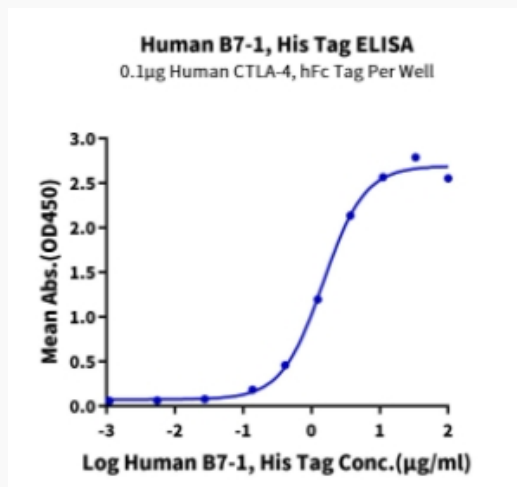
 Email: info@creative-biomart.com  Fax: 1-631-938-8127

 45-1 Ramsey Road, Shirley, NY 11967, USA

Tris-Bis PAGE



ELISA Data



 Tel: 1-631-559-9269 1-516-512-3133

 Email: info@creative-biomart.com  Fax: 1-631-938-8127

 45-1 Ramsey Road, Shirley, NY 11967, USA