

# Recombinant Human CD80 Full Length Transmembrane protein, His-tagged

**Cat. No.** CD80-2407H    **Lot. No.** (See product label)

## SPECIFICATION

<b>Product Overview</b>	Recombinant Human CD80 protein(P33681)(35-288aa), fused to N-terminal His tag, was expressed in E. coli.
<b>Species</b>	Human
<b>Source</b>	E.coli
<b>ProteinLength</b>	35-288aa
<b>Form</b>	If the delivery form is liquid, the default storage buffer is Tris/PBS-based buffer, 5%-50% glycerol. If the delivery form is lyophilized powder, the buffer before lyophilization is Tris/PBS-based buffer, 6% Trehalose, pH 8.0.
<b>Molecular Mass</b>	32.8 kDa
<b>AA Sequence</b>	VIHVTKEVKEVATLSCGHNVSV EELAQTRIWQKEKKMVLTMMSGDMNIWPEYKNR TIFDITNNLSIVILALRPSDEGTYECVVLKYEKDAFKREHLAEVTL SVKADFPTPSISDF EIPTSNIRRIICSTSGGFPEPHLSWLENGEELNAINTTVSQDPETELYAVSSKLDNFMT TNHSFMCLIKYGHLRVNQTFNWNTTKQEHFPDNL LPSWAITLISVNGIFVICCLTYCF APRCRERRRRNERLRRESVRPV
<b>Purity</b>	Greater than 85% as determined by SDS-PAGE.

 Tel: 1-631-559-9269    1-516-512-3133

 Email: [info@creative-biomart.com](mailto:info@creative-biomart.com)     Fax: 1-631-938-8127

 45-1 Ramsey Road, Shirley, NY 11967, USA

**Storage** Store at -20°C/-80°C upon receipt, aliquoting is necessary for mutiple use. Avoid repeated freeze-thaw cycles.

**Reconstitution** Please reconstitute protein in deionized sterile water to a concentration of 0.1-1.0 mg/mL. We recommend to add 5-50% of glycerol (final concentration) and aliquot for long-term storage at -20°C/-80°C. Our default final concentration of glycerol is 50%.

## GENE INFORMATION

**Gene Name** CD80 CD80 molecule [ Homo sapiens ]

**Official Symbol** CD80

**Synonyms** CD80; CD80 molecule; CD28LG, CD28LG1, CD80 antigen (CD28 antigen ligand 1, B7 1 antigen) , CD80 molecule; T-lymphocyte activation antigen CD80; B lymphocyte activation antigen B7; B7 1; B7.1; activation B7-1 antigen; costimulatory factor CD80; CTLA-4 counter-receptor B7.1; B-lymphocyte activation antigen B7; costimulatory molecule variant IgV-CD80; CD80 antigen (CD28 antigen ligand 1, B7-1 antigen); B7; BB1; B7-1; LAB7; CD28LG; CD28LG1;

**Gene ID** 941

**mRNA Refseq** NM\_005191

**Protein Refseq** NP\_005182

**MIM** 112203

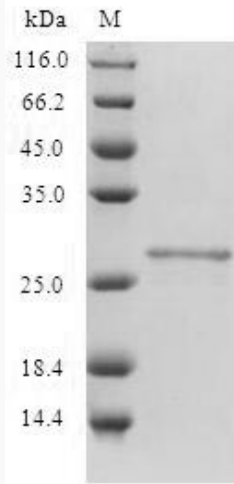
**UniProt ID** P33681

 Tel: 1-631-559-9269 1-516-512-3133

 Email: [info@creative-biomart.com](mailto:info@creative-biomart.com)  Fax: 1-631-938-8127

 45-1 Ramsey Road, Shirley, NY 11967, USA

**SDS-PAGE**



 Tel: 1-631-559-9269 1-516-512-3133

 Email: [info@creative-biomart.com](mailto:info@creative-biomart.com)  Fax: 1-631-938-8127

 45-1 Ramsey Road, Shirley, NY 11967, USA