

Recombinant Human CD80 Protein (ECD), His-tagged(C-ter)

Cat. No. CD80-38H Lot. No. (See product label)

SPECIFICATION

Product Overview	Recombinant Human CD80 Protein (ECD) with His tag (C-ter) was expressed in HEK293.
Species	Human
Source	HEK293
ProteinLength	Val35-Asn242
Description	The protein encoded by this gene is a membrane receptor that is activated by the binding of CD28 or CTLA-4. The activated protein induces T-cell proliferation and cytokine production. This protein can act as a receptor for adenovirus subgroup B and may play a role in lupus neuropathy. [provided by RefSeq, Aug 2011]
Form	Powder
Endotoxin	Endotoxin level is less than 0.1 EU/μg of the protein, as determined by the LAL test.
Purity	> 92% (by SDS-PAGE)
Applications	Binding, SDS-PAGE
Notes	For laboratory research only, not for drug, diagnostic or other use.
Storage	Lyophilized protein should be stored at -20°C or -80°C. After reconstitution, aliquot

 Tel: 1-631-559-9269 1-516-512-3133

 Email: info@creative-biomart.com  Fax: 1-631-938-8127

 45-1 Ramsey Road, Shirley, NY 11967, USA

and store at -20°C for up to one month, at 2-8°C for up to one week. Storage in frost free freezers is not recommended. Avoid repeated freeze/thaw cycles. Suggest spin the vial prior to opening.

Storage Buffer PBS (pH 7.4)

Reconstitution Reconstitute to a concentration of 0.1-0.5 mg/ml in sterile distilled water.

GENE INFORMATION

Gene Name CD80 CD80 molecule [Homo sapiens]

Official Symbol CD80

Synonyms

CD80; CD80 molecule; CD28LG, CD28LG1, CD80 antigen (CD28 antigen ligand 1, B7 1 antigen) , CD80 molecule; T-lymphocyte activation antigen CD80; B lymphocyte activation antigen B7; B7 1; B7.1; activation B7-1 antigen; costimulatory factor CD80; CTLA-4 counter-receptor B7.1; B-lymphocyte activation antigen B7; costimulatory molecule variant IgV-CD80; CD80 antigen (CD28 antigen ligand 1, B7-1 antigen); B7; BB1; B7-1; LAB7; CD28LG; CD28LG1;

Gene ID 941

mRNA Refseq NM_005191

Protein Refseq NP_005182

MIM 112203

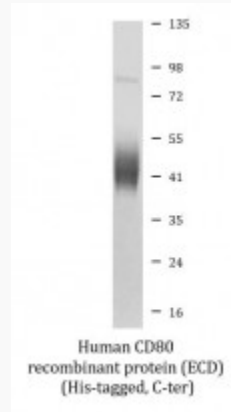
UniProt ID P33681

 Tel: 1-631-559-9269 1-516-512-3133

 Email: info@creative-biomart.com  Fax: 1-631-938-8127

 45-1 Ramsey Road, Shirley, NY 11967, USA

SDS-PAGE



 Tel: 1-631-559-9269 1-516-512-3133

 Email: info@creative-biomart.com  Fax: 1-631-938-8127

 45-1 Ramsey Road, Shirley, NY 11967, USA