

Recombinant Human CD80 protein, hFc-tagged

Cat. No. CD80-530H Lot. No. (See product label)

SPECIFICATION

| | |
|-------------------------|--|
| Product Overview | Recombinant Human CD80 protein(P33681-1)(Val35-Asn242), fused with C-terminal hFc tag, was expressed in HEK293. |
| Species | Human |
| Source | HEK293 |
| ProteinLength | Val35-Asn242 |
| Tag | C-hFc |
| Form | Lyophilized from 0.22µm filtered solution in PBS (pH 7.4). Normally 5% trehalose is added as protectant before lyophilization. |
| Bio-activity | Immobilized Human CTLA-4, His Tag at 0.5µg/ml (100µl/well) on the plate. Dose response curve for Human B7-1, hFc Tag with the EC50 of 21.4ng/ml determined by ELISA. |
| Molecular Mass | The protein has a predicted MW of 50.5 kDa. Due to glycosylation, the protein migrates to 70-80 kDa based on Tris-Bis PAGE result. |
| Endotoxin | Less than 1EU per µg by the LAL method. |
| Purity | > 95% as determined by Tris-Bis PAGE; > 95% as determined by HPLC |

 Tel: 1-631-559-9269 1-516-512-3133

 Email: info@creative-biomart.com  Fax: 1-631-938-8127

 45-1 Ramsey Road, Shirley, NY 11967, USA

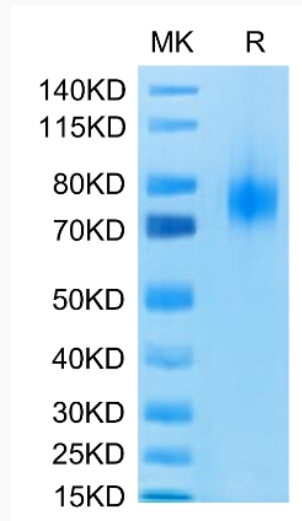
| | |
|-------------------------|--|
| Storage | Reconstituted protein stable at -80°C for 12 months, 4°C for 1 week. Use a manual defrost freezer and avoid repeated freeze-thaw cycles. |
| Reconstitution | Centrifuge tubes before opening. Reconstituting to a concentration more than 100 µg/ml is recommended. Dissolve the lyophilized protein in distilled water. |
| GENE INFORMATION | |
| Gene Name | CD80 CD80 molecule [Homo sapiens] |
| Official Symbol | CD80 |
| Synonyms | CD80; CD80 molecule; CD28LG, CD28LG1, CD80 antigen (CD28 antigen ligand 1, B7 1 antigen) , CD80 molecule; T-lymphocyte activation antigen CD80; B lymphocyte activation antigen B7; B7 1; B7.1; activation B7-1 antigen; costimulatory factor CD80; CTLA-4 counter-receptor B7.1; B-lymphocyte activation antigen B7; costimulatory molecule variant IgV-CD80; CD80 antigen (CD28 antigen ligand 1, B7-1 antigen); B7; BB1; B7-1; LAB7; CD28LG; CD28LG1; |
| Gene ID | 941 |
| mRNA Refseq | NM_005191 |
| Protein Refseq | NP_005182 |
| MIM | 112203 |
| UniProt ID | P33681 |

 Tel: 1-631-559-9269 1-516-512-3133

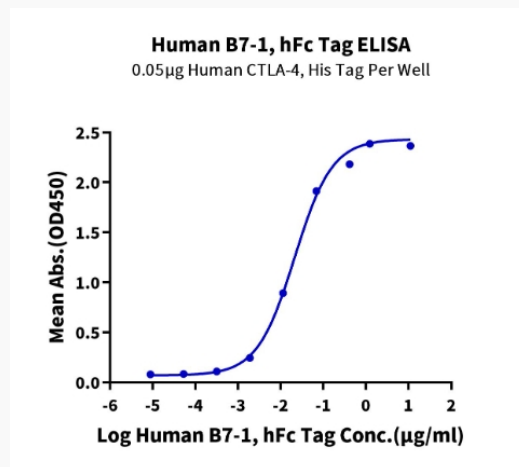
 Email: info@creative-biomart.com  Fax: 1-631-938-8127

 45-1 Ramsey Road, Shirley, NY 11967, USA

Tris-Bis PAGE



ELISA Data



Tel: 1-631-559-9269 1-516-512-3133

Email: info@creative-biomart.com Fax: 1-631-938-8127

45-1 Ramsey Road, Shirley, NY 11967, USA