

Active Recombinant Human CD86 protein, His-tagged

Cat. No. CD86-2624H Lot. No. (See product label)

SPECIFICATION

Product Overview	Active Recombinant Human B7-2/CD86 Protein is produced by HEK293 expression system. The target protein is expressed with sequence (Leu26-Pro247) of human CD86/B7-2 (Accession #NP_008820.2) fused with a 6×His tag at the C-terminus.
Species	Human
Source	HEK293
ProteinLength	Leu26-Pro247
Form	Lyophilized from a 0.22 µm filtered solution of PBS, pH 7.4.
Bio-activity	Measured by its binding ability in a functional ELISA. Immobilized Recombinant Human CD86 at 2 µg/mL (100 µL/well) can bind Recombinant Human CTLA-4 with a linear range of 10-40 ng/mL.
Molecular Mass	57-66 kDa
Endotoxin	< 0.1 EU/µg of the protein by LAL method.
Purity	> 95% by SDS-PAGE.
Storage	Store the lyophilized protein at -20°C to -80 °C for long term. After reconstitution, the protein solution is stable at -20 °C for 3 months, at 2-8 °C for up to 1 week.

 Tel: 1-631-559-9269 1-516-512-3133

 Email: info@creative-biomart.com  Fax: 1-631-938-8127

 45-1 Ramsey Road, Shirley, NY 11967, USA

Reconstitution Reconstitute to a concentration of 0.1-0.5 mg/mL in sterile distilled water.

GENE INFORMATION

Gene Name [CD86 CD86 molecule \[Homo sapiens \]](#)

Official Symbol [CD86](#)

Synonyms CD86; CD86 molecule; CD28LG2, CD86 antigen (CD28 antigen ligand 2, B7 2 antigen); T-lymphocyte activation antigen CD86; B lymphocyte antigen B7 2; B7 2; B7.2; BU63; FUN-1; CTLA-4 counter-receptor B7.2; B-lymphocyte activation antigen B7-2; CD86 antigen (CD28 antigen ligand 2, B7-2 antigen); B70; B7-2; LAB72; CD28LG2; MGC34413;

Gene ID [942](#)

mRNA Refseq [NM_001206924](#)

Protein Refseq [NP_001193853](#)

MIM [601020](#)

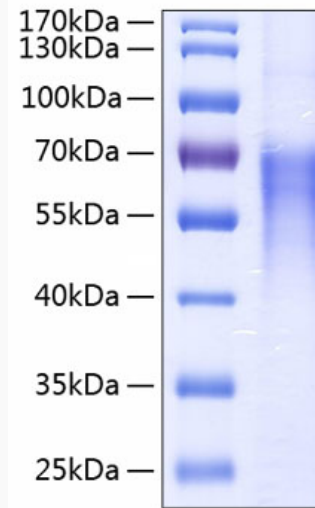
UniProt ID [P42081](#)

 Tel: 1-631-559-9269 1-516-512-3133

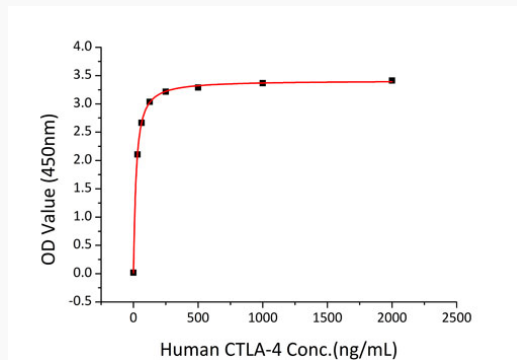
 Email: info@creative-biomart.com  Fax: 1-631-938-8127

 45-1 Ramsey Road, Shirley, NY 11967, USA

SDS-PAGE



Bio-activity



 Tel: 1-631-559-9269 1-516-512-3133

 Email: info@creative-biomart.com  Fax: 1-631-938-8127

 45-1 Ramsey Road, Shirley, NY 11967, USA