

Recombinant Human CD86 Protein (Leu26-Pro247), C-mFc and 6xHis-tagged

Cat. No. CD86-532H Lot. No. (See product label)

SPECIFICATION

Product Overview

Recombinant Human CD86 Protein (Leu26-Pro247) with C-mFc and 6xHis tag was expressed in HEK293.

Species

Human

Source

HEK293

ProteinLength

Leu26-Pro247

Description

This gene encodes a type I membrane protein that is a member of the immunoglobulin superfamily. This protein is expressed by antigen-presenting cells, and it is the ligand for two proteins at the cell surface of T cells, CD28 antigen and cytotoxic T-lymphocyte-associated protein 4. Binding of this protein with CD28 antigen is a costimulatory signal for activation of the T-cell. Binding of this protein with cytotoxic T-lymphocyte-associated protein 4 negatively regulates T-cell activation and diminishes the immune response. Alternative splicing results in several transcript variants encoding different isoforms.

Form

Lyophilized

Molecular Mass


52.4 kDa

Purity

> 95% as determined by SDS-PAGE and Coomassie blue staining.

 Tel: 1-631-559-9269 1-516-512-3133

 Email: info@creative-biomart.com  Fax: 1-631-938-8127

 45-1 Ramsey Road, Shirley, NY 11967, USA

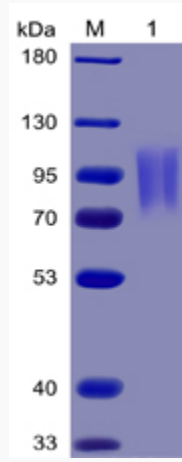
Storage	Store at -80 centigrade for 12 months (Avoid repeated freezing and thawing)
Storage Buffer	Lyophilized from sterile PBS, pH 7.4. Normally 5 % - 41 % trehalose is added as protectants before lyophilization.
GENE INFORMATION	
Gene Name	CD86 CD86 molecule [Homo sapiens (human)]
Official Symbol	CD86
Synonyms	CD86; CD86 molecule; CD28LG2, CD86 antigen (CD28 antigen ligand 2, B7 2 antigen); T-lymphocyte activation antigen CD86; B lymphocyte antigen B7 2; B7 2; B7.2; BU63; FUN-1; CTLA-4 counter-receptor B7.2; B-lymphocyte activation antigen B7-2; CD86 antigen (CD28 antigen ligand 2, B7-2 antigen); B70; B7-2; LAB72; CD28LG2; MGC34413;
Gene ID	942
mRNA Refseq	NM_001206924
Protein Refseq	NP_001193853
MIM	601020
UniProt ID	P42081

 Tel: 1-631-559-9269 1-516-512-3133

 Email: info@creative-biomart.com  Fax: 1-631-938-8127

 45-1 Ramsey Road, Shirley, NY 11967, USA

SDS-PAGE



 Tel: 1-631-559-9269 1-516-512-3133

 Email: info@creative-biomart.com  Fax: 1-631-938-8127

 45-1 Ramsey Road, Shirley, NY 11967, USA