

Recombinant Human CD86 protein, His-Avi-tagged

Cat. No. CD86-580H Lot. No. (See product label)

SPECIFICATION

Product Overview	Recombinant Human CD86 protein(P42081-1)(Leu26-Pro247), fused with C-terminal His and Avi tag, was expressed in HEK293.
Species	Human
Source	HEK293
ProteinLength	Leu26-Pro247
Tag	C-His-Avi
Form	Lyophilized from 0.22µm filtered solution in PBS (pH 7.4). Normally 5% trehalose is added as protectant before lyophilization.
Bio-activity	Immobilized Human B7-2, His Tag at 5µg/ml (100ul/Well) on the plate. Dose response curve for Human CTLA-4, hFc Tag with the EC50 of 8.7ng/ml determined by ELISA.
Molecular Mass	The protein has a predicted MW of 28.2 kDa. Due to glycosylation, the protein migrates to 55-70 kDa based on Tris-Bis PAGE result.
Endotoxin	Less than 1EU per µg by the LAL method.
Purity	> 95% as determined by Tris-Bis PAGE;> 95% as determined by HPLC
Storage	Reconstituted protein stable at -80°C for 12 months, 4°C for 1 week. Use a manual

 Tel: 1-631-559-9269 1-516-512-3133

 Email: info@creative-biomart.com  Fax: 1-631-938-8127

 45-1 Ramsey Road, Shirley, NY 11967, USA

defrost freezer and avoid repeated freeze-thaw cycles.

Reconstitution

Centrifuge tubes before opening. Reconstituting to a concentration more than 100 µg/ml is recommended. Dissolve the lyophilized protein in distilled water.

GENE INFORMATION

Gene Name [CD86 CD86 molecule \[Homo sapiens \]](#)

Official Symbol [CD86](#)

Synonyms

CD86; CD86 molecule; CD28LG2, CD86 antigen (CD28 antigen ligand 2, B7 2 antigen); T-lymphocyte activation antigen CD86; B lymphocyte antigen B7 2; B7 2; B7.2; BU63; FUN-1; CTLA-4 counter-receptor B7.2; B-lymphocyte activation antigen B7-2; CD86 antigen (CD28 antigen ligand 2, B7-2 antigen); B70; B7-2; LAB72; CD28LG2; MGC34413;

Gene ID [942](#)

mRNA Refseq [NM_001206924](#)

Protein Refseq [NP_001193853](#)

MIM [601020](#)

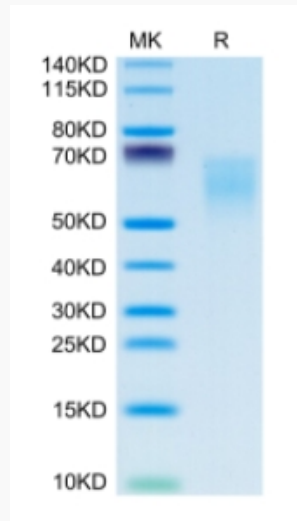
UniProt ID [P42081](#)

 Tel: 1-631-559-9269 1-516-512-3133

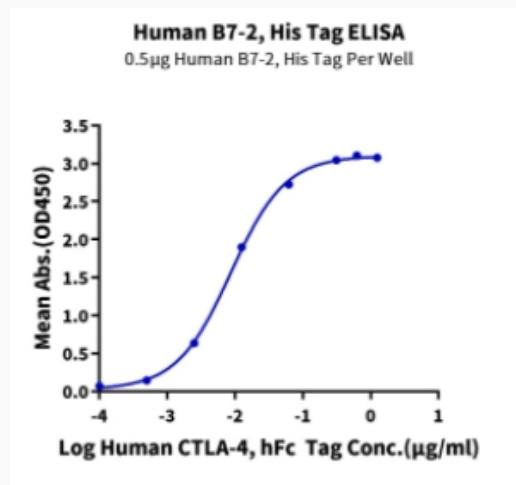
 Email: info@creative-biomart.com  Fax: 1-631-938-8127

 45-1 Ramsey Road, Shirley, NY 11967, USA

Tris-Bis PAGE



ELISA Data



 Tel: 1-631-559-9269 1-516-512-3133

 Email: info@creative-biomart.com  Fax: 1-631-938-8127

 45-1 Ramsey Road, Shirley, NY 11967, USA