

Recombinant Human CD8A Protein, DYKDDDDK-tagged

Cat. No. CD8A-131H **Lot. No.** (See product label)

SPECIFICATION

Product Overview	Recombinant Human CD8a molecule(CD8A), transcript variant 2(NM_171827), with a DYKDDDDK tag, was expressed in human cells.
Species	Human
Source	Human Cells
Description	The CD8 antigen is a cell surface glycoprotein found on most cytotoxic T lymphocytes that mediates efficient cell-cell interactions within the immune system. The CD8 antigen acts as a coreceptor with the T-cell receptor on the T lymphocyte to recognize antigens displayed by an antigen presenting cell in the context of class I MHC molecules. The coreceptor functions as either a homodimer composed of two alpha chains or as a heterodimer composed of one alpha and one beta chain. Both alpha and beta chains share significant homology to immunoglobulin variable light chains. This gene encodes the CD8 alpha chain. Multiple transcript variants encoding different isoforms have been found for this gene.
Form	Purified protein formulated in a sterile solution of TBS buffer, pH7.132, without any preservatives.
Molecular Mass	19.4 kDa
Endotoxin	Endotoxin level is < 0.1 ng/g of protein (<1EU /g)
Purity	>90% by SDS-PAGE gel and Coomassie Blue staining

 Tel: 1-631-559-9269 1-516-512-3133

 Email: info@creative-biomart.com  Fax: 1-631-938-8127

 45-1 Ramsey Road, Shirley, NY 11967, USA

Applications Antigen, Western, ELISA and other in vitro binding or in vivo functional assays, and protein-protein interaction studies.

GENE INFORMATION

Gene Name CD8A CD8a molecule [Homo sapiens]

Official Symbol CD8A

Synonyms CD8A; CD8a molecule; CD8, CD8 antigen, alpha polypeptide (p32) , T cell surface glycoprotein CD8 alpha chain; T-cell surface glycoprotein CD8 alpha chain; T8 T-cell antigen; T cell co-receptor; OKT8 T-cell antigen; T-cell antigen Leu2; Leu2 T-lymphocyte antigen; CD8 antigen, alpha polypeptide (p32); T-lymphocyte differentiation antigen T8/Leu-2; CD8; MAL; p32; Leu2;

Gene ID 925

mRNA Refseq NM_001145873

Protein Refseq NP_001139345

MIM 186910

UniProt ID P01732

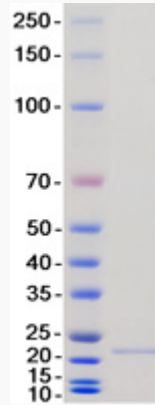
 Tel: 1-631-559-9269 1-516-512-3133

 Email: info@creative-biomart.com  Fax: 1-631-938-8127

 45-1 Ramsey Road, Shirley, NY 11967, USA



SDS-PAGE



Tel: 1-631-559-9269 1-516-512-3133

Email: info@creative-biomart.com Fax: 1-631-938-8127

45-1 Ramsey Road, Shirley, NY 11967, USA