

## Recombinant Human CD8A protein, His-Avi-tagged, Biotinylated

**Cat. No.** CD8A-1670H    **Lot. No.** (See product label)

### SPECIFICATION

<b>Product Overview</b>	Biotinylated Recombinant Human CD8A protein(P01732-1)(Ser22-Asp182), fused with C-terminal His and Avi tag, was expressed in HEK293.
<b>Species</b>	Human
<b>Source</b>	HEK293
<b>ProteinLength</b>	Ser22-Asp182
<b>Tag</b>	C-His-Avi
<b>Conjugation/Label</b>	Biotin
<b>Form</b>	Lyophilized from 0.22µm filtered solution in PBS (pH 7.4). Normally 8% trehalose is added as protectant before lyophilization.
<b>Bio-activity</b>	Immobilized Anti-CD8 Antibody, hFc Tag at 0.5µg/ml (100µl/well) on the plate. Dose response curve for Biotinylated Human CD8 alpha, His Tag with the EC50 of 4.8ng/ml determined by ELISA.
<b>Molecular Mass</b>	The protein has a predicted MW of 20.5 kDa. Due to glycosylation, the protein migrates to 30-38 kDa based on Tris-Bis PAGE result.
<b>Endotoxin</b>	Less than 1EU per µg by the LAL method.

 Tel: 1-631-559-9269    1-516-512-3133

 Email: [info@creative-biomart.com](mailto:info@creative-biomart.com)     Fax: 1-631-938-8127

 45-1 Ramsey Road, Shirley, NY 11967, USA

<b>Purity</b>	> 95% as determined by Tris-Bis PAGE.
<b>Storage</b>	Reconstituted protein stable at -80°C for 12 months, 4°C for 1 week. Use a manual defrost freezer and avoid repeated freeze-thaw cycles.
<b>Reconstitution</b>	Centrifuge tubes before opening. Reconstituting to a concentration more than 100 µg/ml is recommended. Dissolve the lyophilized protein in distilled water.
<b>Conjugation</b>	Biotin

## GENE INFORMATION

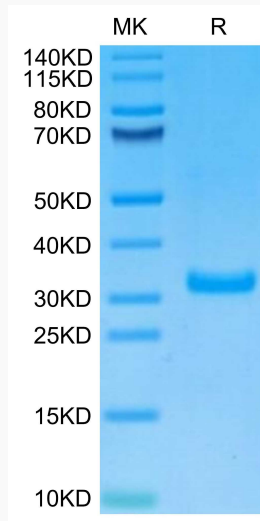
<b>Gene Name</b>	CD8A CD8a molecule [ Homo sapiens ]
<b>Official Symbol</b>	CD8A
<b>Synonyms</b>	CD8A; CD8a molecule; CD8, CD8 antigen, alpha polypeptide (p32) , T cell surface glycoprotein CD8 alpha chain; T-cell surface glycoprotein CD8 alpha chain; T8 T-cell antigen; T cell co-receptor; OKT8 T-cell antigen; T-cell antigen Leu2; Leu2 T-lymphocyte antigen; CD8 antigen, alpha polypeptide (p32); T-lymphocyte differentiation antigen T8/Leu-2; CD8; MAL; p32; Leu2;
<b>Gene ID</b>	925
<b>mRNA Refseq</b>	NM_001145873
<b>Protein Refseq</b>	NP_001139345
<b>MIM</b>	186910
<b>UniProt ID</b>	P01732

 Tel: 1-631-559-9269 1-516-512-3133

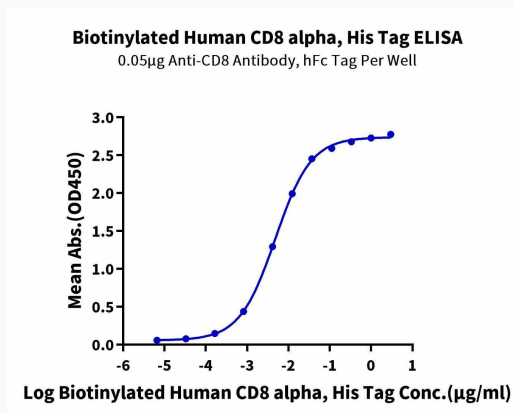
 Email: [info@creative-biomart.com](mailto:info@creative-biomart.com)  Fax: 1-631-938-8127

 45-1 Ramsey Road, Shirley, NY 11967, USA

**Tris-Bis PAGE**



**ELISA**



Tel: 1-631-559-9269 1-516-512-3133

Email: [info@creative-biomart.com](mailto:info@creative-biomart.com) Fax: 1-631-938-8127

45-1 Ramsey Road, Shirley, NY 11967, USA