

## Recombinant Human CD8A Protein, C-His-tagged

**Cat. No.** CD8A-176H    **Lot. No.** (See product label)

### SPECIFICATION

|                         |  |
|-------------------------|--|
| <b>Product Overview</b> | Recombinant Human CD8A Protein with C-His tag was expressed in E. coli.  |
| <b>Species</b>          | Human  |
| <b>Source</b>           | E.coli   |
| <b>Description</b>      | Cluster of Differentiation 8 (CD8) is a disulphide-linked heterodimer consisting of the unrelated $\alpha$ and $\beta$ subunits. Each subunit is a glycoprotein composed of a single extracellular Ig-like domain, a polypeptide linker, a transmembrane part and a short cytoplasmic tail. On T cells, CD8 is the coreceptor for the T cell receptor (TCR), and these two distinct structures recognize the Antigen–Major Histocompatibility Complex (MHC). Specifically, the Ig-like domain of CD8 $\alpha$ interacts with the $\alpha 3$ -domain of the MHC class I molecule. CD8 ensures specificity of the TCR–antigen interaction, prolongs the contact between the T cell and the antigen presenting cell, and the $\alpha$ chain recruits the tyrosine kinase Lck, which is essential for T cell activation. |
| <b>Molecular Mass</b>   | ~18 kDa  |
| <b>AA Sequence</b>      | SQFRVSPLDRTWNLGETVELKCQVLLSNPTSGCSWLFQPRGAAASPTFLLYLSQNK<br>PKAAEGLDTRFSGKRLGDTFVLTLSDFRRENEGYYFCSALSNSIMYFSHFVPVFLP<br>AKPTTTPAPRPPTPAPTIASQPLSLRPEACRPAAGGAVHTRGLDFACD   |
| <b>Purity</b>           | Transferred into competent cells and the supernatant was purified by NI column affinity chromatography and the purity is > 85% (by SDS-PAGE).  |

 Tel: 1-631-559-9269    1-516-512-3133

 Email: [info@creative-biomart.com](mailto:info@creative-biomart.com)     Fax: 1-631-938-8127

 45-1 Ramsey Road, Shirley, NY 11967, USA

|                       |  |
|-----------------------|--|
| <b>Notes</b>          | For research use only, not for use in diagnostic procedure.  |
| <b>Storage</b>        | Store at 4 centigrade short term. Aliquot and store at -20 centigrade long term. Avoid freeze-thaw cycles. |
| <b>Concentration</b>  | ≥0.5 mg/mL   |
| <b>Storage Buffer</b> | PBS, 4M Urea, pH7.4  |

## GENE INFORMATION

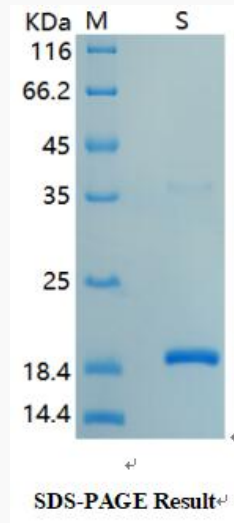
|                        |  |
|------------------------|--|
| <b>Gene Name</b>       | CD8A CD8a molecule [ Homo sapiens (human) ]  |
| <b>Official Symbol</b> | CD8A   |
| <b>Synonyms</b>        | CD8A; CD8a molecule; CD8, CD8 antigen, alpha polypeptide (p32) , T cell surface glycoprotein CD8 alpha chain; T-cell surface glycoprotein CD8 alpha chain; T8 T-cell antigen; T cell co-receptor; OKT8 T-cell antigen; T-cell antigen Leu2; Leu2 T-lymphocyte antigen; CD8 antigen, alpha polypeptide (p32); T-lymphocyte differentiation antigen T8/Leu-2; CD8; MAL; p32; Leu2; |
| <b>Gene ID</b>         | 925  |
| <b>mRNA Refseq</b>     | NM_001145873   |
| <b>Protein Refseq</b>  | NP_001139345   |
| <b>MIM</b>             | 186910   |
| <b>UniProt ID</b>      | P01732   |

 Tel: 1-631-559-9269 1-516-512-3133

 Email: [info@creative-biomart.com](mailto:info@creative-biomart.com)  Fax: 1-631-938-8127

 45-1 Ramsey Road, Shirley, NY 11967, USA

**SDS-PAGE**



 Tel: 1-631-559-9269 1-516-512-3133

 Email: [info@creative-biomart.com](mailto:info@creative-biomart.com)  Fax: 1-631-938-8127

 45-1 Ramsey Road, Shirley, NY 11967, USA