

## Active Recombinant Human CD8A protein, His-tagged

Cat. No. CD8A-3196H Lot. No. (See product label)

### SPECIFICATION

<b>Product Overview</b>	Active Recombinant Human CD8A protein(P01732-1)(Ser22-Asp182) is expressed from HEK293 with His tag at the C-Terminus.
<b>Species</b>	Human
<b>Source</b>	HEK293
<b>ProteinLength</b>	22-182 aa
<b>Form</b>	Lyophilized from 0.22 µm filtered solution in PBS (pH 7.4).
<b>Bio-activity</b>	Immobilized Human CD8 alpha, His Tag at 5µg/ml (100µl/well) on the plate. Dose response curve for Anti-CD8 Antibody, hFc Tag with the EC50 of 10.3ng/ml determined by ELISA.
<b>Molecular Mass</b>	The protein has a predicted MW of 18.70 kDa. Due to glycosylation, the protein migrates to 28-32 kDa based on Bis-Tris PAGE result.
<b>Endotoxin</b>	Less than 1 EU per µg by the LAL method.
<b>Purity</b>	> 95% as determined by Bis-Tris PAGE
<b>Storage</b>	Store at -20 to -80°C for 12 months as supplied from date of receipt. -80°C for 3 months after reconstitution. Recommend to aliquot the protein into smaller quantities for optimal storage. Please minimize freeze-thaw cycles.

 Tel: 1-631-559-9269 1-516-512-3133

 Email: [info@creative-biomart.com](mailto:info@creative-biomart.com)  Fax: 1-631-938-8127

 45-1 Ramsey Road, Shirley, NY 11967, USA

<b>Reconstitution</b>	Dissolve the lyophilized protein in distilled water.
<b>protein Refseq-Weblink</b>	<a href="http://www.ncbi.nlm.nih.gov/protein/NP_001139345.1">http://www.ncbi.nlm.nih.gov/protein/NP_001139345.1</a>
<b>Unit ID</b>	P01732
<b>Unit ID-Weblink</b>	<a href="http://www.uniprot.org/uniprot/P01732">http://www.uniprot.org/uniprot/P01732</a>

## GENE INFORMATION

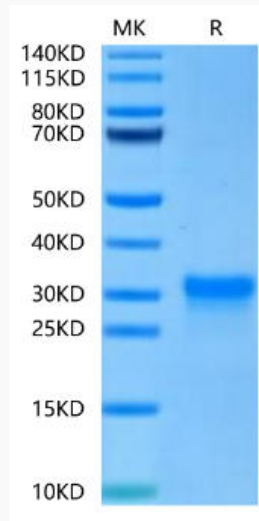
<b>Gene Name</b>	CD8A CD8a molecule [ Homo sapiens ]
<b>Official Symbol</b>	CD8A
<b>Synonyms</b>	CD8A; CD8a molecule; CD8, CD8 antigen, alpha polypeptide (p32) , T cell surface glycoprotein CD8 alpha chain; T-cell surface glycoprotein CD8 alpha chain; T8 T-cell antigen; T cell co-receptor; OKT8 T-cell antigen; T-cell antigen Leu2; Leu2 T-lymphocyte antigen; CD8 antigen, alpha polypeptide (p32); T-lymphocyte differentiation antigen T8/Leu-2; CD8; MAL; p32; Leu2;
<b>Gene ID</b>	925
<b>mRNA Refseq</b>	NM_001145873
<b>protein Refseq</b>	NP_001139345
<b>MIM</b>	186910

 Tel: 1-631-559-9269 1-516-512-3133

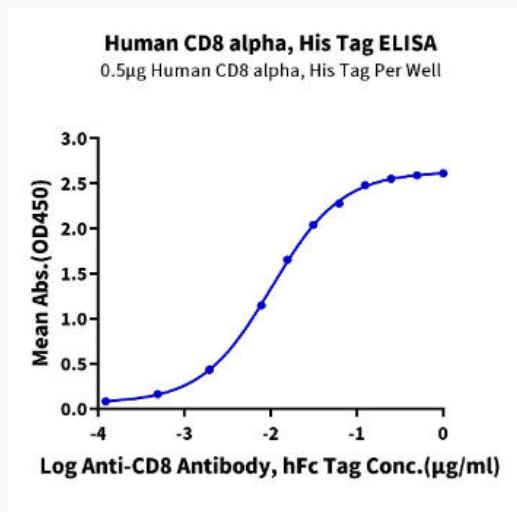
 Email: [info@creative-biomart.com](mailto:info@creative-biomart.com)  Fax: 1-631-938-8127

 45-1 Ramsey Road, Shirley, NY 11967, USA

**Bis-Tris PAGE**



**ELISA Data**



 Tel: 1-631-559-9269 1-516-512-3133

 Email: [info@creative-biomart.com](mailto:info@creative-biomart.com)  Fax: 1-631-938-8127

 45-1 Ramsey Road, Shirley, NY 11967, USA