

Recombinant Human CD8A protein, His-Avi-tagged, Biotinylated

Cat. No. CD8A-6744H Lot. No. (See product label)

SPECIFICATION

Product Overview	Biotinylated Recombinant Human CD8A protein(P01732-1)(Ser22-Asp182), fused with C-terminal His and Avi tag, was expressed in HEK293.
Species	Human
Source	HEK293
ProteinLength	Ser22-Asp182
Tag	C-His-Avi
Conjugation/Label	Biotin
Form	Lyophilized from 0.22µm filtered solution in PBS (pH 7.4). Normally 5% trehalose is added as protectant before lyophilization.
Bio-activity	Immobilized Anti-CD8 Antibody, hFc Tag at 0.5ug/ml (100ul/well) on the plate. Dose response curve for Biotinylated Human CD8 alpha, His Tag with the EC50 of 4.8ng/ml determined by ELISA.
Molecular Mass	The protein has a predicted MW of 20.5 kDa. Due to glycosylation, the protein migrates to 31-35 kDa based on Tris-Bis PAGE result.
Endotoxin	Less than 1EU per µg by the LAL method.

 Tel: 1-631-559-9269 1-516-512-3133

 Email: info@creative-biomart.com  Fax: 1-631-938-8127

 45-1 Ramsey Road, Shirley, NY 11967, USA

Purity	> 95% as determined by Tris-Bis PAGE;> 95% as determined by HPLC
Storage	Reconstituted protein stable at -80°C for 12 months, 4°C for 1 week. Use a manual defrost freezer and avoid repeated freeze-thaw cycles.
Reconstitution	Centrifuge tubes before opening. Reconstituting to a concentration more than 100 µg/ml is recommended. Dissolve the lyophilized protein in distilled water.
Conjugation	Biotin

GENE INFORMATION

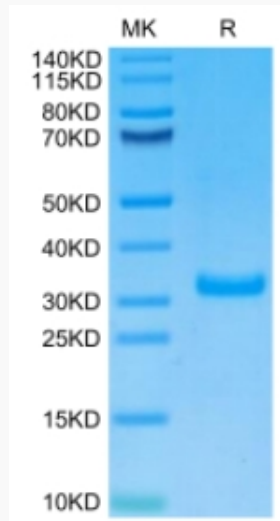
Gene Name	CD8A CD8a molecule [Homo sapiens]
Official Symbol	CD8A
Synonyms	CD8A; CD8a molecule; CD8, CD8 antigen, alpha polypeptide (p32) , T cell surface glycoprotein CD8 alpha chain; T-cell surface glycoprotein CD8 alpha chain; T8 T-cell antigen; T cell co-receptor; OKT8 T-cell antigen; T-cell antigen Leu2; Leu2 T-lymphocyte antigen; CD8 antigen, alpha polypeptide (p32); T-lymphocyte differentiation antigen T8/Leu-2; CD8; MAL; p32; Leu2;
Gene ID	925
mRNA Refseq	NM_001145873
Protein Refseq	NP_001139345
MIM	186910
UniProt ID	P01732

 Tel: 1-631-559-9269 1-516-512-3133

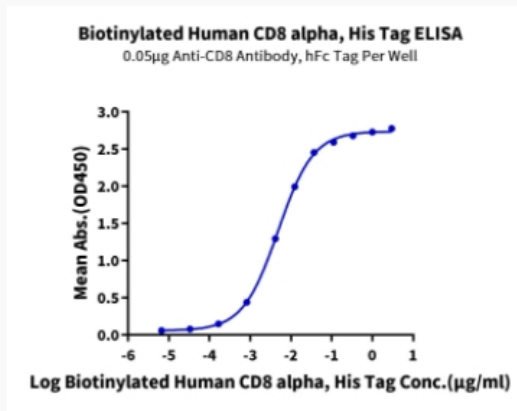
 Email: info@creative-biomart.com  Fax: 1-631-938-8127

 45-1 Ramsey Road, Shirley, NY 11967, USA

Tris-Bis PAGE



ELISA Data



 Tel: 1-631-559-9269 1-516-512-3133

 Email: info@creative-biomart.com  Fax: 1-631-938-8127

 45-1 Ramsey Road, Shirley, NY 11967, USA