

## Recombinant Dog CD8A protein, His-tagged

Cat. No. CD8A-8544D Lot. No. (See product label)

### SPECIFICATION

<b>Product Overview</b>	Recombinant Dog CD8A protein(P33706)(22-186aa), fused with N-terminal His tag, was expressed in E.coli.
<b>Species</b>	Dog
<b>Source</b>	E.coli
<b>ProteinLength</b>	22-186a.a.
<b>Tag</b>	His
<b>Form</b>	If the delivery form is liquid, the default storage buffer is Tris/PBS-based buffer, 5%-50% glycerol. If the delivery form is lyophilized powder, the buffer before lyophilization is Tris/PBS-based buffer, 6% Trehalose, pH 8.0.
<b>Molecular Mass</b>	24.1 kDa
<b>Purity</b>	Greater than 85% as determined by SDS-PAGE.
<b>Storage</b>	Store at -20°C/-80°C upon receipt, aliquoting is necessary for mutiple use. Avoid repeated freeze-thaw cycles.
<b>Reconstitution</b>	We recommend that this vial be briefly centrifuged prior to opening to bring the contents to the bottom. Please reconstitute protein in deionized sterile water to a concentration of 0.1-1.0 mg/mL.We recommend to add 5-50% of glycerol (final

 Tel: 1-631-559-9269 1-516-512-3133

 Email: [info@creative-biomart.com](mailto:info@creative-biomart.com)  Fax: 1-631-938-8127

 45-1 Ramsey Road, Shirley, NY 11967, USA



concentration) and aliquot for long-term storage at -20°C/-80°C.

**AA Sequence**

SGPSRFRMTPPKVVGQLHAQVELQCQVLLSTAAPGCSWLYQRNEPAARPVFLMYIS  
QSRAPAEGLDTKHISGQKKTDSTYSLTLRFRKEDEGYFCSVLSNSILYFSPFVPV  
FLPVKPPTTPAPRPPTRAPTNASKPVSPRGETCRPAAGSAVKTSGLDFACE

**GENE INFORMATION**

**Gene Name**

CD8A CD8a molecule [ *Canis lupus familiaris* ]

**Official Symbol**

CD8A

**Synonyms**

CD8A; CD8a molecule; T-cell surface glycoprotein CD8 alpha chain; CD8 antigen, alpha polypeptide (p32);

**Gene ID**

403157

**mRNA Refseq**

NM\_001002935

**Protein Refseq**

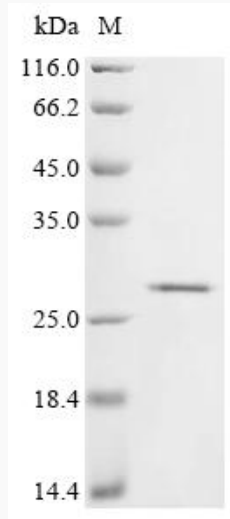
NP\_001002935

Tel: 1-631-559-9269 1-516-512-3133

Email: [info@creative-biomart.com](mailto:info@creative-biomart.com) Fax: 1-631-938-8127

45-1 Ramsey Road, Shirley, NY 11967, USA

**SDS-PAGE**



 Tel: 1-631-559-9269 1-516-512-3133

 Email: [info@creative-biomart.com](mailto:info@creative-biomart.com)  Fax: 1-631-938-8127

 45-1 Ramsey Road, Shirley, NY 11967, USA