

Recombinant Human CD8B Protein, GST-Tagged

Cat. No. CD8B-0880H Lot. No. (See product label)

SPECIFICATION

Product Overview	Human CD8B1 full-length ORF (NP_757362.1, 1 a.a. - 243 a.a.) recombinant protein with GST-tag at N-terminal.
Species	Human
Source	Wheat Germ
Description	<p>The CD8 antigen is a cell surface glycoprotein found on most cytotoxic T lymphocytes that mediates efficient cell-cell interactions within the immune system. The CD8 antigen, acting as a coreceptor, and the T-cell receptor on the T lymphocyte recognize antigens displayed by an antigen presenting cell (APC) in the context of class I MHC molecules. The functional coreceptor is either a homodimer composed of two alpha chains, or a heterodimer composed of one alpha and one beta chain. Both alpha and beta chains share significant homology to immunoglobulin variable light chains. This gene encodes the CD8 beta chain isoforms. Multiple alternatively spliced transcript variants encoding distinct membrane associated or secreted isoforms have been described. A pseudogene, also located on chromosome 2, has been identified. [provided by RefSeq, May 2010]</p>
Molecular Mass	53.6 kDa
AA Sequence	MRPRLWLLAAQLTVLHGNSVLQQTPAYIKVQTNKMVMLSCEAKISLSNMRIYWLRQ RQAPSSDSHHEFLALWDSAKGTIHGEEVEQEKIIVFRDASRFILNLTSVKPEDSGIYF CMIVGSPELTFGKGTQLSVVDFLPTTAQPTKKSTLKKRVCRLPRPETQKGPLCSPITL

 Tel: 1-631-559-9269 1-516-512-3133

 Email: info@creative-biomart.com  Fax: 1-631-938-8127

 45-1 Ramsey Road, Shirley, NY 11967, USA

GLLVAGVLVLLVSLGVAIHLCCRRRRARLRFMKQPQEGEGISGTFVPQCLHGYYSNTT
TSQKLLNPWILKT

Applications
Enzyme-linked Immunoabsorbent Assay
Western Blot (Recombinant protein)
Antibody Production
Protein Array

Storage Store at -80 centigrade. Aliquot to avoid repeated freezing and thawing.

Storage Buffer 50 mM Tris-HCl, 10 mM reduced Glutathione, pH=8.0 in the elution buffer.

GENE INFORMATION

Gene Name CD8B CD8b molecule [Homo sapiens]

Official Symbol CD8B

Synonyms CD8B; CD8b molecule; CD8 antigen, beta polypeptide 1 (p37), CD8B1; T-cell surface glycoprotein CD8 beta chain; CD8 antigen, beta polypeptide 1 (p37); T lymphocyte surface glycoprotein beta chain; LY3; P37; LEU2; LYT3; CD8B1; MGC119115;

Gene ID 926

mRNA Refseq NM_001178100

Protein Refseq NP_001171571

MIM 186730

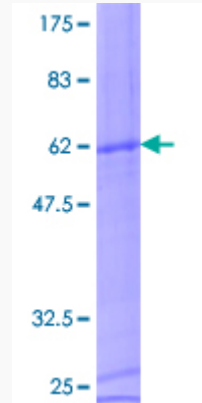
UniProt ID P10966

 Tel: 1-631-559-9269 1-516-512-3133

 Email: info@creative-biomart.com  Fax: 1-631-938-8127

 45-1 Ramsey Road, Shirley, NY 11967, USA

**Quality Control
Testing**



12.5% SDS-PAGE Stained with Coomassie Blue.

 Tel: 1-631-559-9269 1-516-512-3133

 Email: info@creative-biomart.com  Fax: 1-631-938-8127

 45-1 Ramsey Road, Shirley, NY 11967, USA