

Recombinant Human CD8B Protein, C-His-tagged

Cat. No. CD8B-177H Lot. No. (See product label)

SPECIFICATION

Product Overview	Recombinant Human CD8B Protein with C-His tag was expressed in E. coli.
Species	Human
Source	E.coli
Description	<p>The T cell receptor (TCR) is a heterodimer composed of either a and b or γ and δ chains. CD3 chains and the CD4 or CD8 co-receptors are also required for efficient signal transduction through the TCR. The TCR is expressed on T helper and T cytotoxic cells that can be distinguished by their expression of CD4 and CD8. T helper cells express CD4 proteins and T cytotoxic cells display CD8. CD8 (also designated Leu 2 or T8), a cell surface glycoprotein, is a two chain complex (aa or ab) receptor that binds class I MHC molecules presented by the antigen-presenting cell (APC). A primary function of CD8 is to facilitate antigen recognition by the TCR and to strengthen the avidity of the TCR-antigen interactions. An additional role for CD8-expressing T cells may be to maintain low levels of HIV expression.</p>
Molecular Mass	~16 kDa
AA Sequence	LQQTPAYIKVQTNKMVMLSCEAKISLSNMRIYWLRQRQAPSSDSHHEFLALWDSAK GTIHGEEVEQEKIAVFRDASRFILNLTSVKPEDSGIYFCMIVGSPELTFGKGTQLSVVD FLPTTAQPTKKSTLKKRVCRLRPETQKGPLCSP
Purity	Transferred into competent cells and the supernatant was purified by NI column affinity chromatography and the purity is > 85% (by SDS-PAGE).

 Tel: 1-631-559-9269 1-516-512-3133

 Email: info@creative-biomart.com  Fax: 1-631-938-8127

 45-1 Ramsey Road, Shirley, NY 11967, USA

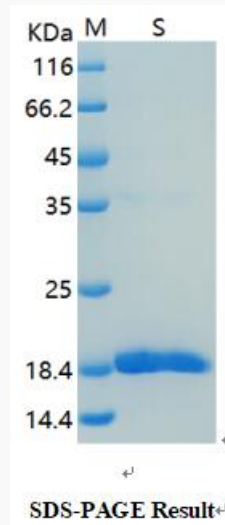
Notes	For research use only, not for use in diagnostic procedure.
Storage	Store at 4 centigrade short term. Aliquot and store at -20 centigrade long term. Avoid freeze-thaw cycles.
Concentration	≥0.5 mg/mL
Storage Buffer	PBS, 4M Urea, pH7.4
GENE INFORMATION	
Gene Name	CD8B CD8b molecule [Homo sapiens (human)]
Official Symbol	CD8B
Synonyms	CD8B; CD8b molecule; CD8 antigen, beta polypeptide 1 (p37) , CD8B1; T-cell surface glycoprotein CD8 beta chain; CD8 antigen, beta polypeptide 1 (p37); T lymphocyte surface glycoprotein beta chain; LY3; P37; LEU2; LYT3; CD8B1; MGC119115;
Gene ID	926
mRNA Refseq	NM_001178100
Protein Refseq	NP_001171571
MIM	186730
UniProt ID	P10966

 Tel: 1-631-559-9269 1-516-512-3133

 Email: info@creative-biomart.com  Fax: 1-631-938-8127

 45-1 Ramsey Road, Shirley, NY 11967, USA

SDS-PAGE



 Tel: 1-631-559-9269 1-516-512-3133

 Email: info@creative-biomart.com  Fax: 1-631-938-8127

 45-1 Ramsey Road, Shirley, NY 11967, USA