

## Recombinant Human CD8B Protein (Met1-Pro170), C-Fc tagged

Cat. No. CD8B-5305H Lot. No. (See product label)

### SPECIFICATION

<b>Product Overview</b>	Recombinant human CD8B (Met1-Pro170) fused with the C-terminal Fc tag was expressed in mammalian cells.
<b>Species</b>	Human
<b>Source</b>	Mammalian Cells
<b>ProteinLength</b>	Met1-Pro170
<b>Form</b>	Lyophilized powder/frozen liquid
<b>Molecular Mass</b>	43.7 kDa
<b>Endotoxin</b>	< 1.0 EU/μg of the protein as determined by the LAL method.
<b>Purity</b>	>90% as determined by SDS-PAGE.
<b>Notes</b>	For research use only.
<b>Storage</b>	Use a manual defrost freezer and avoid repeated freeze thaw cycles. Store at 2 to 8 centigrade for one week. Store at -20 to -80 centigrade for twelve months from the date of receipt.
<b>Storage Buffer</b>	Supplied as solution form in PBS or lyophilized from PBS.

 Tel: 1-631-559-9269 1-516-512-3133

 Email: [info@creative-biomart.com](mailto:info@creative-biomart.com)  Fax: 1-631-938-8127

 45-1 Ramsey Road, Shirley, NY 11967, USA

**Reconstitution** Reconstitute in sterile water for a stock solution.

**Shipping** They are shipped out with dry ice/blue ice unless customers require otherwise.

## GENE INFORMATION

**Gene Name** CD8B CD8b molecule [ Homo sapiens (human) ]

**Official Symbol** CD8B

**Synonyms** CD8B; CD8b molecule; CD8 antigen, beta polypeptide 1 (p37), CD8B1; T-cell surface glycoprotein CD8 beta chain; CD8 antigen, beta polypeptide 1 (p37); T lymphocyte surface glycoprotein beta chain; LY3; P37; LEU2; LYT3; CD8B1; MGC119115;

**Gene ID** 926

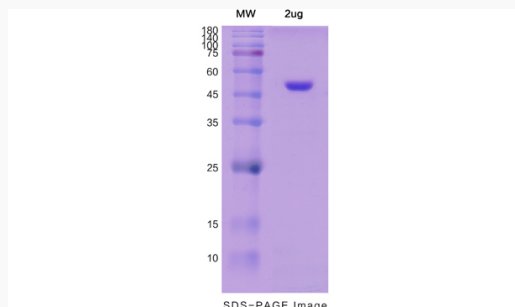
**mRNA Refseq** NM\_001178100

**Protein Refseq** NP\_001171571

**MIM** 186730

**UniProt ID** P10966

### SDS-PAGE



Tel: 1-631-559-9269 1-516-512-3133

Email: [info@creative-biomart.com](mailto:info@creative-biomart.com) Fax: 1-631-938-8127

45-1 Ramsey Road, Shirley, NY 11967, USA