

## CD8a protein-coupled magnetic MicroBeads

Cat. No. CD8a-4291M Lot. No. (See product label)

### SPECIFICATION

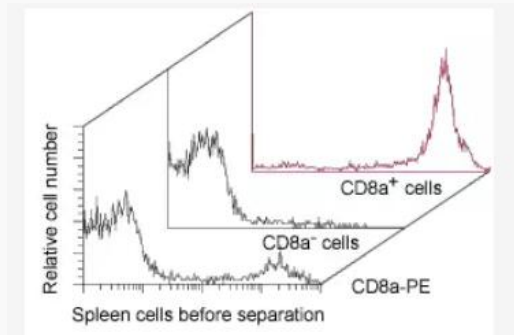
<b>Species</b>	Rat
<b>Capacity</b>	for $1 \times 10^9$ total cells
<b>Background</b>	<p>CD8a MicroBeads recognize the immunoglobulin-like domain of the CD8<math>\alpha</math> chain, which is expressed as a heterodimer with CD8<math>\beta</math> on TCR<math>\alpha/\beta</math><sup>+</sup> and TCR<math>\gamma/\delta</math><sup>+</sup> cytotoxic T cells and on most thymocytes.</p> <p>As a homodimer of two CD8<math>\alpha</math> chains, the CD8 antigen is expressed on most NK cells, a major fraction of intestinal intraepithelial lymphocytes, on some activated CD4<sup>+</sup>CD8<sup>+</sup> double-positive T cells, and on CD8<sup>+</sup> T cells from athymic rats. CD8a is also expressed by a T cell subset with regulatory functions.</p>
<b>Application</b>	<p>Thymocytes or mature T cells isolated with CD8a MicroBeads can be used for in vitro analysis<sup>1</sup> or in vivo reconstitution of T cells, MHC restriction, tolerance induction, and cytokine expression experiments. Functionality of the isolated cells has been shown by several adoptive transfer experiments. Transfer of isolated CD4<sup>+</sup> and CD8a<sup>+</sup> T cells into irradiated recipients results in donor-specific acceptance to heart transplants or type V collagen-induced tolerance to lung allografts. Furthermore, autoimmunity and induction of tolerance after xenogeneic thymus transplantation was studied by adoptive transfer of T cells separated by MACS Technology.</p>

 Tel: 1-631-559-9269 1-516-512-3133

 Email: [info@creative-biomart.com](mailto:info@creative-biomart.com)  Fax: 1-631-938-8127

 45-1 Ramsey Road, Shirley, NY 11967, USA

**Analysis**



Isolation of CD8a+ cells from rat spleen using CD8a MicroBeads, a MidiMACS Separator, and an LS Column.

 Tel: 1-631-559-9269 1-516-512-3133

 Email: [info@creative-biomart.com](mailto:info@creative-biomart.com)  Fax: 1-631-938-8127

 45-1 Ramsey Road, Shirley, NY 11967, USA