

## Recombinant Human CD96 Protein, GST-Tagged

**Cat. No.** CD96-0887H    **Lot. No.** (See product label)

### SPECIFICATION

<b>Product Overview</b>	Human CD96 full-length ORF (AAH20749, 1 a.a. - 402 a.a.) recombinant protein with GST-tag at N-terminal.
<b>Species</b>	Human
<b>Source</b>	Wheat Germ
<b>Description</b>	The protein encoded by this gene belongs to the immunoglobulin superfamily. It is a type I membrane protein. The protein may play a role in the adhesive interactions of activated T and NK cells during the late phase of the immune response. It may also function in antigen presentation. Alternative splicing generates multiple transcript variants encoding distinct isoforms. [provided by RefSeq, Jan 2016]
<b>Molecular Mass</b>	69.96 kDa
<b>AA Sequence</b>	MEKKWKYCAVYYIIQIHFKVGVWEKTVNTEENVYATLGSDVNLTCQTQTVGFFVQM QWSKVTNKIDLIAVYHPQYGFYCA YGRPCESLVTFTEPENGRWTLHLRNMSCSV SGRYECMLVLYPEGIQTKIYNLLIQTHVTADEWNSNHTIEIEINQTL EIPCFQNSSSKIS SEFTYAWSVEDNGTQETLISQNHLSNSTLLKDRVKLGTDYRLHLSPVQIFDDGRKFS CHIRVGPNKILRSSTTVKVFAPKPEIPVIVENNSTDV LVERRFTCLLKNVFPKANITW FID GSFLHDEKEGIYITNEERKKGKDGFL ELKSVLTRVHSNKPAQSDNLTIWCMALSPVPG NKVWNISGKITFLLGSEISSTDPPLSVTESTLDTQPSPASSVSPASKNVFTLSY
<b>Applications</b>	Enzyme-linked Immunoabsorbent Assay Western Blot (Recombinant protein)

 Tel: 1-631-559-9269    1-516-512-3133

 Email: [info@creative-biomart.com](mailto:info@creative-biomart.com)     Fax: 1-631-938-8127

 45-1 Ramsey Road, Shirley, NY 11967, USA

Antibody Production  
Protein Array

**Storage** Store at -80 centigrade. Aliquot to avoid repeated freezing and thawing.

**Storage Buffer** 50 mM Tris-HCl, 10 mM reduced Glutathione, pH=8.0 in the elution buffer.

## GENE INFORMATION

**Gene Name** CD96 CD96 molecule [ Homo sapiens ]

**Official Symbol** CD96

**Synonyms** CD96; CD96 molecule; CD96 antigen; T-cell surface protein tactile; TACTILE; cell surface antigen CD96; T cell activation, increased late expression; t cell-activated increased late expression protein; MGC22596; DKFZp667E2122;

**Gene ID** 10225

**mRNA Refseq** NM\_005816

**Protein Refseq** NP\_005807

**MIM** 606037

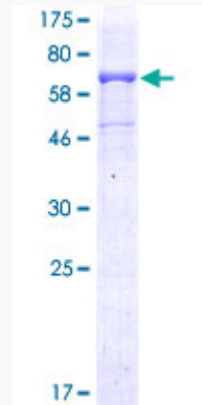
**UniProt ID** P40200

 Tel: 1-631-559-9269 1-516-512-3133

 Email: [info@creative-biomart.com](mailto:info@creative-biomart.com)  Fax: 1-631-938-8127

 45-1 Ramsey Road, Shirley, NY 11967, USA

**Quality Control  
Testing**



12.5% SDS-PAGE Stained with Coomassie Blue.

 Tel: 1-631-559-9269 1-516-512-3133

 Email: [info@creative-biomart.com](mailto:info@creative-biomart.com)  Fax: 1-631-938-8127

 45-1 Ramsey Road, Shirley, NY 11967, USA