

Recombinant Human CD96 protein, His-tagged

Cat. No. CD96-1561H **Lot. No.** (See product label)

SPECIFICATION

Product Overview	Recombinant Human CD96 protein(P40200-2)(Val22-Met503(C110S)), fused with C-terminal His tag, was expressed in HEK293.
Species	Human
Source	C-His
ProteinLength	Val22-Met503(C110S)
Tag	C-His
Form	Lyophilized from 0.22µm filtered solution in PBS (pH 7.4). Normally 8% trehalose is added as protectant before lyophilization.
Bio-activity	Immobilized Anti-CD96 Antibody, hFc Tag at 2µg/ml (100µl/well) on the plate. Dose response curve for Human CD96 (C110S), His Tag with the EC50 of 28.7ng/ml determined by ELISA.
Molecular Mass	The protein has a predicted MW of 54.63 kDa. Due to glycosylation, the protein migrates to 100-130 kDa based on Tris-Bis PAGE result.
Endotoxin	Less than 1EU per µg by the LAL method.
Purity	> 95% as determined by Tris-Bis PAGE; > 95% as determined by HPLC.

 Tel: 1-631-559-9269 1-516-512-3133

 Email: info@creative-biomart.com  Fax: 1-631-938-8127

 45-1 Ramsey Road, Shirley, NY 11967, USA

Storage Reconstituted protein stable at -80°C for 12 months, 4°C for 1 week. Use a manual defrost freezer and avoid repeated freeze-thaw cycles.

Reconstitution Centrifuge tubes before opening. Reconstituting to a concentration more than 100 µg/ml is recommended. Dissolve the lyophilized protein in distilled water.

GENE INFORMATION

Gene Name [CD96 CD96 molecule \[Homo sapiens \]](#)

Official Symbol [CD96](#)

Synonyms CD96; CD96 molecule; CD96 antigen; T-cell surface protein tactile; TACTILE; cell surface antigen CD96; T cell activation, increased late expression; t cell-activated increased late expression protein; MGC22596; DKFZp667E2122;

Gene ID [10225](#)

mRNA Refseq [NM_005816](#)

Protein Refseq [NP_005807](#)

MIM [606037](#)

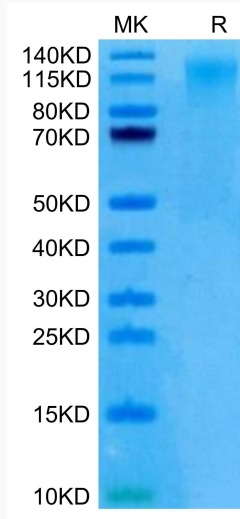
UniProt ID [P40200](#)

 Tel: 1-631-559-9269 1-516-512-3133

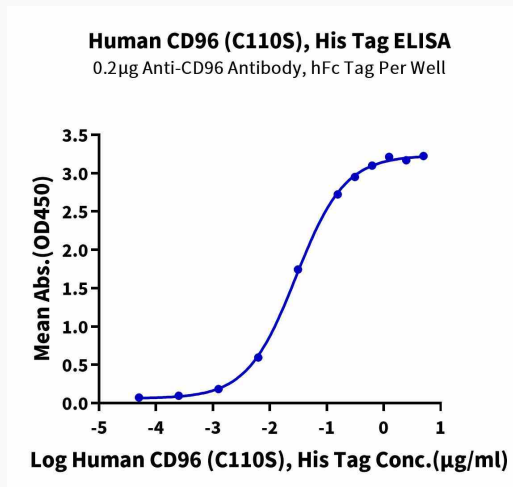
 Email: info@creative-biomart.com  Fax: 1-631-938-8127

 45-1 Ramsey Road, Shirley, NY 11967, USA

Tris-Bis PAGE



ELISA



Tel: 1-631-559-9269 1-516-512-3133

Email: info@creative-biomart.com Fax: 1-631-938-8127

45-1 Ramsey Road, Shirley, NY 11967, USA