

Recombinant Human CD96 protein, mFc-tagged

Cat. No. CD96-357H **Lot. No.** (See product label)

SPECIFICATION

Product Overview	Recombinant Human CD96 protein(P40200-2)(Val22-Met503), fused with C-terminal mFc tag, was expressed in HEK293.
Species	Human
Source	HEK293
ProteinLength	Val22-Met503
Tag	C-mFc
Form	Supplied as 0.22µm filtered solution in PBS (pH 7.4).
Bio-activity	Immobilized Human CD96, mFc Tag at 5ug/ml (100ul/Well) on the plate. Dose response curve for Human CD155, hFc Tag with the EC50 of 0.19ug/ml determined by ELISA (QC Test).
Molecular Mass	The protein has a predicted MW of 79.8 kDa. Due to glycosylation, the protein migrates to 120-160 kDa based on Tris-Bis PAGE result.
Endotoxin	Less than 1EU per µg by the LAL method.
Purity	> 95% as determined by Tris-Bis PAGE;> 95% as determined by HPLC
Storage	Valid for 12 months from date of receipt when stored at -80°C. Recommend to aliquot

 Tel: 1-631-559-9269 1-516-512-3133

 Email: info@creative-biomart.com  Fax: 1-631-938-8127

 45-1 Ramsey Road, Shirley, NY 11967, USA

the protein into smaller quantities for optimal storage. Please do not repeated freeze-thaw cycles.

Reconstitution

It is recommended that sterile water be added to the vial to prepare a stock solution of 0.2 ug/ul. Centrifuge the vial at 4°C before opening to recover the entire contents.

GENE INFORMATION

Gene Name [CD96 CD96 molecule \[Homo sapiens \]](#)

Official Symbol [CD96](#)

Synonyms

CD96; CD96 molecule; CD96 antigen; T-cell surface protein tactile; TACTILE; cell surface antigen CD96; T cell activation, increased late expression; t cell-activated increased late expression protein; MGC22596; DKFZp667E2122;

Gene ID [10225](#)

mRNA Refseq [NM_005816](#)

Protein Refseq [NP_005807](#)

MIM [606037](#)

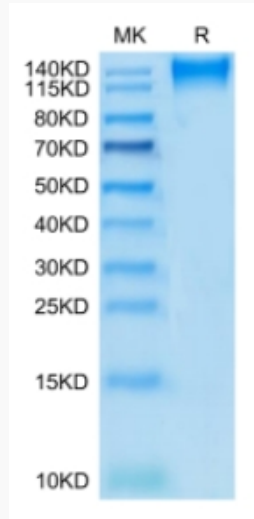
UniProt ID [P40200](#)

 Tel: 1-631-559-9269 1-516-512-3133

 Email: info@creative-biomart.com  Fax: 1-631-938-8127

 45-1 Ramsey Road, Shirley, NY 11967, USA

Tris-Bis PAGE



ELISA Data

 Tel: 1-631-559-9269 1-516-512-3133

 Email: info@creative-biomart.com  Fax: 1-631-938-8127

 45-1 Ramsey Road, Shirley, NY 11967, USA