

Active Recombinant Human CD96 protein, His-tagged

Cat. No. CD96-3887H **Lot. No.** (See product label)

SPECIFICATION

Product Overview	Active Recombinant Human CD96 protein(P40200-2)(Val22-Met503) is expressed from HEK293 with His tag at the C-Terminus.
Species	Human
Source	HEK293
ProteinLength	22-503 aa
Form	Lyophilized from 0.22µm filtered solution in PBS (pH 7.4).
Bio-activity	Immobilized Anti-CD96 Antibody, hFc Tag at 1µg/ml (100µl/well) on the plate. Dose response curve for Human CD96, His Tag with the EC50 of 28.8ng/ml determined by ELISA.
Molecular Mass	The protein has a predicted MW of 54.7 kDa. Due to glycosylation, the protein migrates to 115-130 kDa based on Bis-Tris PAGE result.
Endotoxin	Less than 1 EU per ug by the LAL method.
Purity	> 95% as determined by Bis-Tris PAGE
Storage	Store at -20 to -80°C for 12 months as supplied from date of receipt. -80°C for 3 months after reconstitution. Recommend to aliquot the protein into smaller quantities for optimal storage. Please minimize freeze-thaw cycles.

 Tel: 1-631-559-9269 1-516-512-3133

 Email: info@creative-biomart.com  Fax: 1-631-938-8127

 45-1 Ramsey Road, Shirley, NY 11967, USA

Reconstitution	Dissolve the lyophilized protein in distilled water.
protein Refseq-Weblink	http://www.ncbi.nlm.nih.gov/protein/NP_005807.1
Unit ID	P40200
Unit ID-Weblink	https://www.uniprot.org/uniprotkb/P40200

GENE INFORMATION

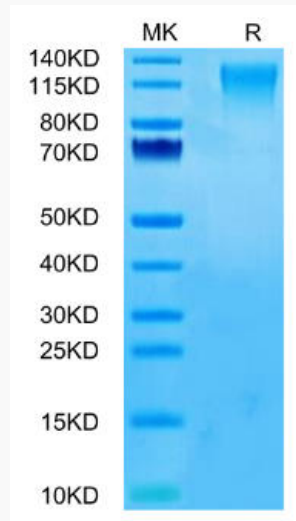
Gene Name	CD96 CD96 molecule [Homo sapiens]
Official Symbol	CD96
Synonyms	CD96; CD96 molecule; CD96 antigen; T-cell surface protein tactile; TACTILE; cell surface antigen CD96; T cell activation, increased late expression; t cell-activated increased late expression protein; MGC22596; DKFZp667E2122;
Gene ID	10225
mRNA Refseq	NM_005816
protein Refseq	NP_005807
MIM	606037

 Tel: 1-631-559-9269 1-516-512-3133

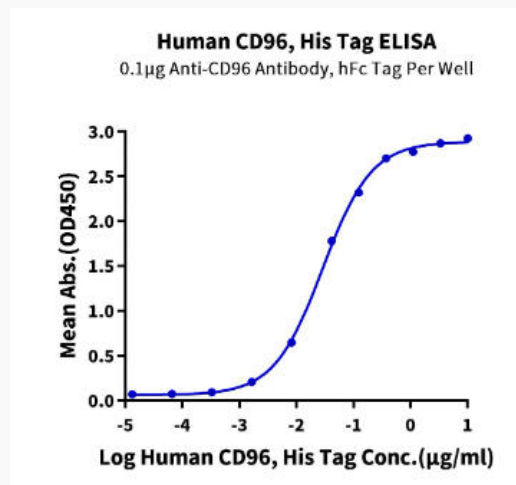
 Email: info@creative-biomart.com  Fax: 1-631-938-8127

 45-1 Ramsey Road, Shirley, NY 11967, USA

Bis-Tris PAGE



ELISA Data



Tel: 1-631-559-9269 1-516-512-3133

Email: info@creative-biomart.com Fax: 1-631-938-8127

45-1 Ramsey Road, Shirley, NY 11967, USA