

Recombinant Human CD99L2 Protein, GST-Tagged

Cat. No. CD99L2-0893H **Lot. No.** (See product label)

SPECIFICATION

Product Overview	Human CD99L2 full-length ORF (AAH25729.1, 1 a.a. - 145 a.a.) recombinant protein with GST-tag at N-terminal.
Species	Human
Source	Wheat Germ
Description	This gene encodes a cell-surface protein that is similar to CD99. A similar protein in mouse functions as an adhesion molecule during leukocyte extravasation. Alternate splicing results in multiple transcript variants. [provided by RefSeq, May 2010]
Molecular Mass	42.1 kDa
AA Sequence	MVAWRSAFLVCLAFSLATLVQRGSGDFDDFNLEDAVKETSSVKPALGMYHKLDGLK QQNFILSLFWMLEVLYQGVGWATFSLKALGKNLSLTFPTSGGSRCSLVCGCITPISA SVVTWCSPFCVSLLSLTKMLVSGFKAHLDNPG
Applications	Enzyme-linked Immunoabsorbent Assay Western Blot (Recombinant protein) Antibody Production Protein Array
Storage	Store at -80 centigrade. Aliquot to avoid repeated freezing and thawing.
Storage Buffer	50 mM Tris-HCl, 10 mM reduced Glutathione, pH=8.0 in the elution buffer.

 Tel: 1-631-559-9269 1-516-512-3133

 Email: info@creative-biomart.com  Fax: 1-631-938-8127

 45-1 Ramsey Road, Shirley, NY 11967, USA

GENE INFORMATION

Gene Name CD99L2 CD99 molecule-like 2 [Homo sapiens]

Official Symbol CD99L2

Synonyms CD99L2; CD99 molecule-like 2; CD99 antigen like 2, MIC2 like 1, MIC2L1; CD99 antigen-like protein 2; CD99B; MIC2 like 1; MIC2-like protein 1; MIC2L1; DKFZp761H2024;

Gene ID 83692

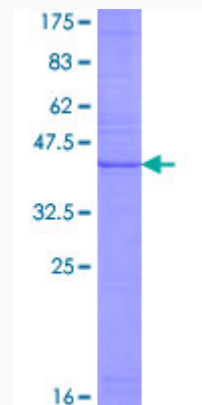
mRNA Refseq NM_001184808

Protein Refseq NP_001171737

MIM 300846

UniProt ID Q8TCZ2

Quality Control Testing



12.5% SDS-PAGE Stained with Coomassie Blue.

 Tel: 1-631-559-9269 1-516-512-3133

 Email: info@creative-biomart.com  Fax: 1-631-938-8127

 45-1 Ramsey Road, Shirley, NY 11967, USA