

# Recombinant Human CD99L2 Protein, Myc/DDK-tagged, C13 and N15-labeled

**Cat. No.** CD99L2-4388H    **Lot. No.** (See product label)

## SPECIFICATION

<b>Product Overview</b>	CD99L2 MS Standard C13 and N15-labeled recombinant protein (NP_113650) with a C-terminal MYC/DDK tag, was expressed in HEK293 cells.
<b>Species</b>	Human
<b>Source</b>	HEK293
<b>Description</b>	This gene encodes a cell-surface protein that is similar to CD99. A similar protein in mouse functions as an adhesion molecule during leukocyte extravasation. Alternate splicing results in multiple transcript variants.
<b>Molecular Mass</b>	28 kDa
<b>AA Sequence</b>	MVAWRS AFLVCLAFSLATLVQRGSGDFDDFNLEDAVKETSSVKQPWDHTTTTTTNR PGTTRAPAKPPGSGLDLADALDDQDDGRRKPGIGGRERWNHVTTTTTKRPVTRAP ANTLGNDFDLADALDDRNRDDGRRKPIAGGGGFSDKDLEDIVGGGEYKPKDKGK DGRYGSNDDPGSGMVAEPGTIAGVASALAMALIGAVSSYISYQQKKFCFSIQQGLNA DYVKGENLEAVVCEEPQVKYSTLHTQSAEPPPPPEPARITRTRPLEQKLISEEDLAA NDILDYKDDDDKV
<b>Purity</b>	> 80% as determined by SDS-PAGE and Coomassie blue staining
<b>Stability</b>	Stable for 3 months from receipt of products under proper storage and handling conditions.

 Tel: 1-631-559-9269    1-516-512-3133

 Email: [info@creative-biomart.com](mailto:info@creative-biomart.com)     Fax: 1-631-938-8127

 45-1 Ramsey Road, Shirley, NY 11967, USA

<b>Storage</b>	Store at -80 centigrade. Avoid repeated freeze-thaw cycles.
<b>Concentration</b>	50 µg/mL as determined by BCA
<b>Storage Buffer</b>	100 mM glycine, 25 mM Tris-HCl, pH 7.3.

## GENE INFORMATION

<b>Gene Name</b>	CD99L2 CD99 molecule-like 2 [ Homo sapiens (human) ]
<b>Official Symbol</b>	CD99L2
<b>Synonyms</b>	CD99L2; CD99 molecule-like 2; CD99 antigen like 2, MIC2 like 1, MIC2L1; CD99 antigen-like protein 2; CD99B; MIC2 like 1; MIC2-like protein 1; MIC2L1; DKFZp761H2024;
<b>Gene ID</b>	83692
<b>mRNA Refseq</b>	NM_031462
<b>Protein Refseq</b>	NP_113650
<b>MIM</b>	300846
<b>UniProt ID</b>	Q8TCZ2

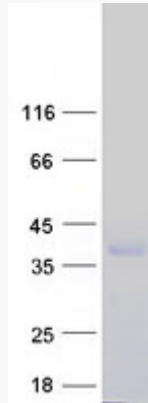
 Tel: 1-631-559-9269 1-516-512-3133

 Email: [info@creative-biomart.com](mailto:info@creative-biomart.com)  Fax: 1-631-938-8127

 45-1 Ramsey Road, Shirley, NY 11967, USA



SDS-PAGE



Tel: 1-631-559-9269 1-516-512-3133

Email: [info@creative-biomart.com](mailto:info@creative-biomart.com) Fax: 1-631-938-8127

45-1 Ramsey Road, Shirley, NY 11967, USA