

Recombinant Human CDA Protein, GST-Tagged

Cat. No. CDA-0894H **Lot. No.** (See product label)

SPECIFICATION

Product Overview	Human CDA full-length ORF (AAH54036, 1 a.a. - 146 a.a.) recombinant protein with GST-tag at N-terminal.
Species	Human
Source	Wheat Germ
Description	<p>This gene encodes an enzyme involved in pyrimidine salvaging. The encoded protein forms a homotetramer that catalyzes the irreversible hydrolytic deamination of cytidine and deoxycytidine to uridine and deoxyuridine, respectively. It is one of several deaminases responsible for maintaining the cellular pyrimidine pool. Mutations in this gene are associated with decreased sensitivity to the cytosine nucleoside analogue cytosine arabinoside used in the treatment of certain childhood leukemias. [provided by RefSeq, Jul 2008]</p>
Molecular Mass	41.8 kDa
AA Sequence	<p>MAQKRPACTLKPECVQQLLVCSQEAKQSAYCPYSHFPVGAALLTQEGRIFKGCNIE NACYPLGICAERTAIQKAVSEGYKDFRAIAIASDMQDDFISPCGACRQVMREFGTNW PVYMTKPDGTYIVMTVQELLPSSFGPEDLQKTQ</p>
Applications	<p>Enzyme-linked Immunoabsorbent Assay Western Blot (Recombinant protein) Antibody Production Protein Array</p>

 Tel: 1-631-559-9269 1-516-512-3133

 Email: info@creative-biomart.com  Fax: 1-631-938-8127

 45-1 Ramsey Road, Shirley, NY 11967, USA

Storage Store at -80 centigrade. Aliquot to avoid repeated freezing and thawing.

Storage Buffer 50 mM Tris-HCl, 10 mM reduced Glutathione, pH=8.0 in the elution buffer.

GENE INFORMATION

Gene Name CDA cytidine deaminase [Homo sapiens]

Official Symbol CDA

Synonyms CDA; cytidine deaminase; CDD; cytidine aminohydrolase; small cytidine deaminase; cytosine nucleoside deaminase;

Gene ID 978

mRNA Refseq NM_001785

Protein Refseq NP_001776

MIM 123920

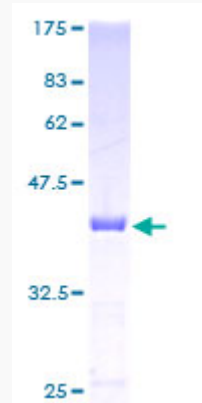
UniProt ID P32320

 Tel: 1-631-559-9269 1-516-512-3133

 Email: info@creative-biomart.com  Fax: 1-631-938-8127

 45-1 Ramsey Road, Shirley, NY 11967, USA

**Quality Control
Testing**



12.5% SDS-PAGE Stained with Coomassie Blue.

 Tel: 1-631-559-9269 1-516-512-3133

 Email: info@creative-biomart.com  Fax: 1-631-938-8127

 45-1 Ramsey Road, Shirley, NY 11967, USA