

## Recombinant Human CDADC1 Protein, GST-Tagged

Cat. No. CDADC1-0895H Lot. No. (See product label)

### SPECIFICATION

<b>Product Overview</b>	Human CDADC1 full-length ORF (NP_112173.1, 1 a.a. - 514 a.a.) recombinant protein with GST-tag at N-terminal.
<b>Species</b>	Human
<b>Source</b>	Wheat Germ
<b>Description</b>	CDADC1 (Cytidine And DCMP Deaminase Domain Containing 1) is a Protein Coding gene. GO annotations related to this gene include hydrolase activity.
<b>Molecular Mass</b>	84.9 kDa
<b>AA Sequence</b>	<p>MKEAGQMQLNLESARAGRSVSTQTGSMTGQIPRLSKVNLFTLLSLWMELFPAAEQR            QKSQKNEEGKHGPLGDNEERTRVSTDKRQVKRTGLVVKNMKIVGLHCSSDLHA            GQIALIKHGSRLKNCPLYFSRKPSCACLKMIIVNAGVNRISYWPADPEISLLTEASSSE            DAKLDAKAVERLKSNSRAHVCVLLQPLVCYMVQFVEETSYKCDFIQKITKTLPDANT            DFYYECKQERIKIKEYEMFLVSNEMHKQILMTIGLENLCENPYFSNLRQNMKDLILL            ATVASSVPNFKHFGFYRSNPEQINEIHNQSLPQEIARHCMVQARLLAYRTEDHKTGV            GAVIWAEGKSRSCDGTGAMYFVGCGYNAFPVGSEYADFPHMDDKQKDREIRKFRY            IIAEQNALTFRCQEIKPEERSMIFVTKPCDECVPLIKGAGIKQIYAGDVDVGKKKAD            ISYMRFGELGVSFKFTWQLNPSGAYGLEQNEPERRENGVLRPVPQKEEQHQDKKL            RLGIIH</p>
<b>Applications</b>	Enzyme-linked Immunoabsorbent Assay Western Blot (Recombinant protein)

Tel: 1-631-559-9269 1-516-512-3133

Email: [info@creative-biomart.com](mailto:info@creative-biomart.com) Fax: 1-631-938-8127

45-1 Ramsey Road, Shirley, NY 11967, USA

Antibody Production  
Protein Array

**Storage** Store at -80 centigrade. Aliquot to avoid repeated freezing and thawing.

**Storage Buffer** 50 mM Tris-HCl, 10 mM reduced Glutathione, pH=8.0 in the elution buffer.

## GENE INFORMATION

**Gene Name** [CDADC1 cytidine and dCMP deaminase domain containing 1 \[ Homo sapiens \]](#)

**Official Symbol** [CDADC1](#)

**Synonyms** CDADC1; cytidine and dCMP deaminase domain containing 1; cytidine and dCMP deaminase domain-containing protein 1; NYD SP15; protein kinase NYD-SP15; testis development protein NYD-SP15; NYD-SP15; bA103J18.1; MGC41774; MGC57136; RP11-103J18.2; MGC150615;

**Gene ID** [81602](#)

**mRNA Refseq** [NM\\_001193478](#)

**Protein Refseq** [NP\\_001180407](#)

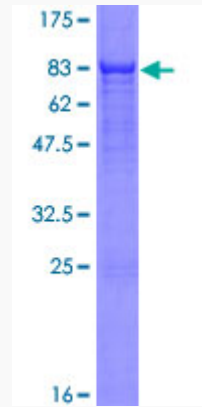
**UniProt ID** [Q9BWV3](#)

 Tel: 1-631-559-9269 1-516-512-3133

 Email: [info@creative-biomart.com](mailto:info@creative-biomart.com)  Fax: 1-631-938-8127

 45-1 Ramsey Road, Shirley, NY 11967, USA

**Quality Control  
Testing**



12.5% SDS-PAGE Stained with Coomassie Blue.

 Tel: 1-631-559-9269 1-516-512-3133

 Email: [info@creative-biomart.com](mailto:info@creative-biomart.com)  Fax: 1-631-938-8127

 45-1 Ramsey Road, Shirley, NY 11967, USA