

Recombinant Human CDC123 Protein, C-His-tagged

Cat. No. CDC123-162H Lot. No. (See product label)

SPECIFICATION

Product Overview	Recombinant Human CDC123 Protein with C-His tag was expressed in E. coli.
Species	Human
Source	E.coli
Description	CDC123 required for S phase entry of the cell cycle.
Molecular Mass	~37 kDa
AA Sequence	KKEHVLHCQFSAWYPPFRGVTIKSVILPLPQNVKDYLLDDGTLVVSGRDDPPTHSQP DSDDEAEEIQWSDDENTATLTAPEFPEFATKVQEAINSLGGSVFPKLNWSAPRDAY WIAMNSSLKCKTSLDIFLLFKSSDFITRDFTQPFHCTDDSPDPCIEYELVLRKWCELIP GAEFRFCFVKENKLIGISQRDYTQYYDHISKQKEEIRRCIQDFFKKHIQYKFLDEDFVFD IYRDSRGKVWLIDFNPFGEVTDSELLFTWEELISENNLNGDFSEVDAQEQDSPAFRCT NSEVTVQPSPYLSYRLPKDFVDLSTGEDAHKLIDFLKLRNQQEDD
Purity	Transferred into competent cells and the supernatant was purified by NI column affinity chromatography and the purity is > 85% (by SDS-PAGE).
Notes	For research use only, not for use in diagnostic procedure.
Storage	Store at 4 centigrade short term. Aliquot and store at -20 centigrade long term. Avoid freeze-thaw cycles.

 Tel: 1-631-559-9269 1-516-512-3133

 Email: info@creative-biomart.com  Fax: 1-631-938-8127

 45-1 Ramsey Road, Shirley, NY 11967, USA

Concentration ≥0.5 mg/mL

Storage Buffer PBS, 4M Urea, pH7.4

GENE INFORMATION

Gene Name CDC123 cell division cycle 123 homolog (*S. cerevisiae*) [*Homo sapiens* (human)]

Official Symbol CDC123

Synonyms CDC123; cell division cycle 123 homolog (*S. cerevisiae*); C10orf7, chromosome 10 open reading frame 7; cell division cycle protein 123 homolog; D123; PZ32; HT-1080; C10orf7; FLJ13863;

Gene ID 8872

mRNA Refseq NM_006023

Protein Refseq NP_006014

MIM 617708

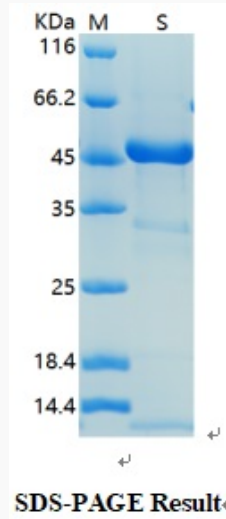
UniProt ID O75794

 Tel: 1-631-559-9269 1-516-512-3133

 Email: info@creative-biomart.com  Fax: 1-631-938-8127

 45-1 Ramsey Road, Shirley, NY 11967, USA

SDS-PAGE



 Tel: 1-631-559-9269 1-516-512-3133

 Email: info@creative-biomart.com  Fax: 1-631-938-8127

 45-1 Ramsey Road, Shirley, NY 11967, USA