

Recombinant Human CDC123 Protein, Myc/DDK-tagged, C13 and N15-labeled

Cat. No. CDC123-4524H **Lot. No.** (See product label)

SPECIFICATION

Product Overview	CDC123 MS Standard C13 and N15-labeled recombinant protein (NP_006014) with a C-terminal MYC/DDK tag, was expressed in HEK293 cells.
Species	Human
Source	HEK293
Description	Required for S phase entry of the cell cycle.
Molecular Mass	39.1 kDa
AA Sequence	<p>MKKEHVLHCQFSAWYPPFRGVTIKSVILPLPQNVKDYLLDDGTLVVSGRDDPPTHSSQ PDSDEAEIQQWSDDENTATLTAPEFPEFATKVQEAINSLGGSVFPKLNWSAPRDA YWIAMNSSLKCKTLSDIFLLFKSSDFITRDFTQPFIHCTDDSPDPCIEYELVLRKWCELI PGAEFRFCFVKENKLIGISQRDYTQYYDHISKQKEEIRRCIQDFFKKHIQYKFLDEDFVF DIYRDSRGKVLIDFNPFGEVTDSSLFTWEELISENNLNGDFSEVDAQEQDSPAFC TNSEVTVQSPYLSYRLPKDFVDLSTGEDAHKLIDFLKLRNQQEDDTRTRPLEQKLI SEEDLAANDILDYKDDDDKV</p>
Purity	> 80% as determined by SDS-PAGE and Coomassie blue staining
Stability	Stable for 3 months from receipt of products under proper storage and handling conditions.

 Tel: 1-631-559-9269 1-516-512-3133

 Email: info@creative-biomart.com  Fax: 1-631-938-8127

 45-1 Ramsey Road, Shirley, NY 11967, USA

Storage Store at -80 centigrade. Avoid repeated freeze-thaw cycles.

Concentration 50 µg/mL as determined by BCA

Storage Buffer 100 mM glycine, 25 mM Tris-HCl, pH 7.3.

GENE INFORMATION

Gene Name CDC123 cell division cycle 123 [Homo sapiens (human)]

Official Symbol CDC123

Synonyms CDC123; cell division cycle 123 homolog (S. cerevisiae); C10orf7, chromosome 10 open reading frame 7; cell division cycle protein 123 homolog; D123; PZ32; HT-1080; C10orf7; FLJ13863;

Gene ID 8872

mRNA Refseq NM_006023

Protein Refseq NP_006014

MIM 617708

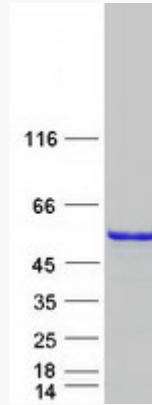
UniProt ID O75794

 Tel: 1-631-559-9269 1-516-512-3133

 Email: info@creative-biomart.com  Fax: 1-631-938-8127

 45-1 Ramsey Road, Shirley, NY 11967, USA

SDS-PAGE



 Tel: 1-631-559-9269 1-516-512-3133

 Email: info@creative-biomart.com  Fax: 1-631-938-8127

 45-1 Ramsey Road, Shirley, NY 11967, USA