

Recombinant Human CDC14A Protein, GST-Tagged

Cat. No. CDC14A-0898H **Lot. No.** (See product label)

SPECIFICATION

Product Overview Human CDC14A full-length ORF (NP_003663.2, 1 a.a. - 594 a.a.) recombinant protein with GST-tag at N-terminal.

Species Human

Source Wheat Germ

Description The protein encoded by this gene is a member of the dual specificity protein tyrosine phosphatase family. It is highly similar to *Saccharomyces cerevisiae* Cdc14, a protein tyrosine phosphatase involved in the exit of cell mitosis and initiation of DNA replication, suggesting a role in cell cycle control. This protein has been shown to interact with, and dephosphorylate tumor suppressor protein p53, and is thought to regulate the function of p53. Alternative splicing of this gene results in several transcript variants encoding distinct isoforms. [provided by RefSeq, Jul 2008]

Molecular Mass 90.97 kDa

AA Sequence MAAESGELIGACEFMKDRLYFATLRNRPKSTVNTHYFSIDEELVYENFYADFGPLNL
 AMVYRYCCKLNKCLKSYSLSRKKIVHYTCFDQRKRANAFLIGAYAVIYLKKTPEEAY
 RALLSGSNPPYLPFRDASFGNCTYNLTILDCLQGIRKGLQHGFDFETFDFVDEYEHY
 ERVENGDFNWIVPGKFLAFSGPHPKSKIENGYPLHAPEAYFPYFKKHNVTAVVRLNK
 KIYEAKRFTDAGFEHYDLFFIDGSTPSDNIVRRFLNICENTEGAI AVHCKAGLGRTGTL
 IACYVMKHRYRFTAEIIAWIRICRPGSIIGPQQHFLEEKQASLWVQGDIFRSKLNRP
 SEGSINKILSGLDDMSIGGNLSKTQNMERFGEDNLEDDDVEMKNGITQGDKLRALKS

 Tel: 1-631-559-9269 1-516-512-3133

 Email: info@creative-biomart.com  Fax: 1-631-938-8127

 45-1 Ramsey Road, Shirley, NY 11967, USA

QRQPRTSPSCAFRSDDTKGHPRAVSQPFRLLSSSLQGSVTLKTSKMALSPSATAKR
 INRTSLSSGATVRSFSINSRLASSLGNLNAATDDPENKKTSSSSKAGFTASPFTNLLN
 GSSQPTRNYPELNNNQYNRSSNSNGGNLNSPPGPHSAKTEEHTTILRPSYTGSS
 SSARFLRSIPSLSQSEYVHY

Applications
 Enzyme-linked Immunoabsorbent Assay
 Western Blot (Recombinant protein)
 Antibody Production
 Protein Array

Storage Store at -80 centigrade. Aliquot to avoid repeated freezing and thawing.

Storage Buffer 50 mM Tris-HCl, 10 mM reduced Glutathione, pH=8.0 in the elution buffer.

GENE INFORMATION

Gene Name CDC14A CDC14 cell division cycle 14 homolog A (*S. cerevisiae*) [*Homo sapiens*]

Official Symbol CDC14A

Synonyms CDC14A; CDC14 cell division cycle 14 homolog A (*S. cerevisiae*); CDC10 (cell division cycle 10, *S. cerevisiae*, homolog); dual specificity protein phosphatase CDC14A; cdc14; Cdc14A1; Cdc14A2; hCDC14;

Gene ID 8556

mRNA Refseq NM_003672

Protein Refseq NP_003663

MIM 603504

 Tel: 1-631-559-9269 1-516-512-3133

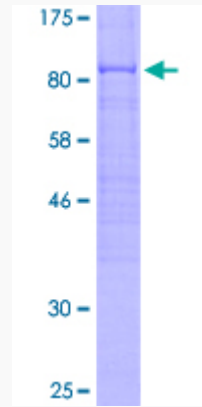
 Email: info@creative-biomart.com  Fax: 1-631-938-8127

 45-1 Ramsey Road, Shirley, NY 11967, USA

UniProt ID

Q9UNH5

Quality Control
Testing



12.5% SDS-PAGE Stained with Coomassie Blue.

 Tel: 1-631-559-9269 1-516-512-3133

 Email: info@creative-biomart.com  Fax: 1-631-938-8127

 45-1 Ramsey Road, Shirley, NY 11967, USA