

Recombinant Human CDC16 Protein, GST-Tagged

Cat. No. CDC16-0902H Lot. No. (See product label)

SPECIFICATION

Product Overview	Human CDC16 full-length ORF (AAH17244, 1 a.a. - 620 a.a.) recombinant protein with GST-tag at N-terminal.
Species	Human
Source	Wheat Germ
Description	The protein encoded by this gene functions as a protein ubiquitin ligase and is a component of the multiprotein APC complex. The APC complex is a cyclin degradation system that governs exit from mitosis by targeting cell cycle proteins for degradation by the 26S proteasome. Each component protein of the APC complex is highly conserved among eukaryotic organisms. This protein, and other APC complex proteins, contain a tetratricopeptide repeat (TPR) domain; a protein domain that is often involved in protein-protein interactions and the assembly of multiprotein complexes. Multiple alternatively spliced transcript variants, encoding distinct proteins, have been identified. [provided by RefSeq, Jan 2016]
Molecular Mass	93.83 kDa
AA Sequence	MNLERLRKRVRQYLDQQYQSALFWADKVASLSREEPQDIYWLAQCLYLTAQYHR AAHALRSRKLDKLYEACRYLAARCHYAAKEHQALDVLDMEEPINKRLEKYLKDES GFKDPSSDWEMSQSSIKSSICLLRGKIYDALDNRTLATYSYKEALKLDVYCFEAFDLL TSHHMLTAQEEKELLESPLSKLCNEEQELLRFLFENKLLKYNKPSETVIPESVDGLQ ENLDVVVSLAERHYNCDFKMCYKLTSVVMEKDPFHASCLP VHIGTLVELNKANELF

Tel: 1-631-559-9269 1-516-512-3133

Email: info@creative-biomart.com Fax: 1-631-938-8127

45-1 Ramsey Road, Shirley, NY 11967, USA

YLSHKLVDLYPSNPVSWFAVGCYYLMVGHKNEHARRYLSKATTLEKTYGPAWIAYG
 HSFAVESEHDQAMAAYFTAQMLMKGCHLPMLYIGLEYGLTNNSKLAERFFSQALSIA
 PEDPFVMHEVGVVAFQNGEWKTAEKWFLDALEKIKAIAGNEVTVDKWEPLLNNGHV
 CRKLLKYAEALDYHRQALVLIPQNASTYSAIGYIHSLMGNFENAVDYFHTALGLRRD
 DTFSVTMLGHCIEMYIGDSEAYIGADIKDKLKCDFVHTMKTCLKNIISPPWDFREFE
 VEKQTAEEETGLTPLETSRKTPDSRPSLEETFEIEMNESDMMLETSMSDHST

Applications	Enzyme-linked Immunoabsorbent Assay Western Blot (Recombinant protein) Antibody Production Protein Array
Storage	Store at -80 centigrade. Aliquot to avoid repeated freezing and thawing.
Storage Buffer	50 mM Tris-HCl, 10 mM reduced Glutathione, pH=8.0 in the elution buffer.

GENE INFORMATION

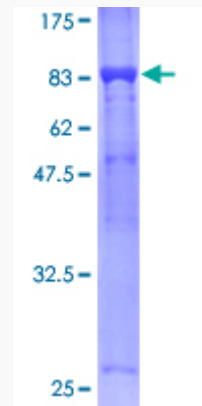
Gene Name	CDC16 cell division cycle 16 homolog (<i>S. cerevisiae</i>) [<i>Homo sapiens</i>]
Official Symbol	CDC16
Synonyms	CDC16; cell division cycle 16 homolog (<i>S. cerevisiae</i>); CDC16 (cell division cycle 16, <i>S. cerevisiae</i> , homolog), CDC16 cell division cycle 16 homolog (<i>S. cerevisiae</i>); cell division cycle protein 16 homolog; ANAPC6; anaphase promoting complex; subunit 6; APC6; CUT9; CDC16Hs; cyclosome subunit 6; anaphase-promoting complex subunit 6; anaphase-promoting complex, subunit 6;
Gene ID	8881
mRNA Refseq	NM_001078645

Protein Refseq NP_001072113

MIM 603461

UniProt ID Q13042

**Quality Control
Testing**



12.5% SDS-PAGE Stained with Coomassie Blue.

 Tel: 1-631-559-9269 1-516-512-3133

 Email: info@creative-biomart.com  Fax: 1-631-938-8127

 45-1 Ramsey Road, Shirley, NY 11967, USA