

Recombinant Human CDC16 Protein, Myc/DDK-tagged, C13 and N15-labeled

Cat. No. CDC16-3535H **Lot. No.** (See product label)

SPECIFICATION

Product Overview	CDC16 MS Standard C13 and N15-labeled recombinant protein (NP_001072113) with a C-terminal MYC/DDK tag, was expressed in HEK293 cells.
Species	Human
Source	HEK293
Description	The protein encoded by this gene functions as a protein ubiquitin ligase and is a component of the multiprotein APC complex. The APC complex is a cyclin degradation system that governs exit from mitosis by targeting cell cycle proteins for degradation by the 26S proteasome. Each component protein of the APC complex is highly conserved among eukaryotic organisms. This protein, and other APC complex proteins, contain a tetratricopeptide repeat (TPR) domain; a protein domain that is often involved in protein-protein interactions and the assembly of multiprotein complexes. Multiple alternatively spliced transcript variants, encoding distinct proteins, have been identified.
Molecular Mass	71.5 kDa
AA Sequence	MNLRLRKRVRQYLDQQYQSALFWADKVASLSREEPQDIYWLAQCLYLTAQYHRAAHALRSRKLDKLYEACRYLAARCHYAAKEHQALDVLDMEEPINKRLEFEKYLKDES GFKDPSSDWEMSQSSIKSSICLLRGKIYDALDNRTLATYSYKEALKLDVYCFEAFDLL TSHHMLTAQEEKELLESPLSKLCNEEQELLRFLFENKLLKYNKPSETVIPESVDGLQ

 Tel: 1-631-559-9269 1-516-512-3133

 Email: info@creative-biomart.com  Fax: 1-631-938-8127

 45-1 Ramsey Road, Shirley, NY 11967, USA

ENLDVVVSLAERHYYNCDFKMCYKLTSVVMEKDPFHASCLPVHIGTLVELNKANELF
 YLSHKLVDLYPSNPVSWFAVGCYYLMVGHKNEHARRYLSKATTLEKTYGPAWIAYG
 HSFAVESEHDQAMAAYFTAAQLMKGCHLPMLYIGLEYGLTNNSKLAERFFSQALSIA
 PEDPFVMHEVGVVAFQNGEWKTAEKWFLDALEKIKAIAGNEVTVDKWEPLLNGLGHV
 CRKLLKYAEALDYHRQALVLIPQNASTYSAIGYIHSLMGNFENAVDYFHTALGLRRD
 DTFSVTMLGHCIEMYIGDSEAYIGADIKDKLKCYPDVDVHTMKTLEKNIISPPWDFREFE
 VEKQTAEEETGLTPLETSRKTPDSRPSLEETFEIEMNESDMMLETSMDSHSTTRTRPL
 EQKLISEEDLAANDILDYKDDDDKV

Purity	> 80% as determined by SDS-PAGE and Coomassie blue staining
Stability	Stable for 3 months from receipt of products under proper storage and handling conditions.
Storage	Store at -80 centigrade. Avoid repeated freeze-thaw cycles.
Concentration	50 µg/mL as determined by BCA
Storage Buffer	100 mM glycine, 25 mM Tris-HCl, pH 7.3.

GENE INFORMATION

Gene Name	CDC16 cell division cycle 16 [<i>Homo sapiens</i> (human)]
Official Symbol	CDC16
Synonyms	CDC16; cell division cycle 16 homolog (<i>S. cerevisiae</i>); CDC16 (cell division cycle 16, <i>S. cerevisiae</i> , homolog), CDC16 cell division cycle 16 homolog (<i>S. cerevisiae</i>); cell division cycle protein 16 homolog; ANAPC6; anaphase promoting complex; subunit 6; APC6; CUT9; CDC16Hs; cyclosome subunit 6; anaphase-promoting complex subunit 6; anaphase-promoting complex, subunit 6;

 Tel: 1-631-559-9269 1-516-512-3133

 Email: info@creative-biomart.com  Fax: 1-631-938-8127

 45-1 Ramsey Road, Shirley, NY 11967, USA

Gene ID 8881

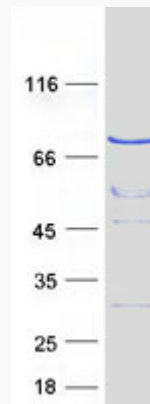
mRNA Refseq NM_001078645

Protein Refseq NP_001072113

MIM 603461

UniProt ID Q13042

SDS-PAGE



Tel: 1-631-559-9269 1-516-512-3133

Email: info@creative-biomart.com Fax: 1-631-938-8127

45-1 Ramsey Road, Shirley, NY 11967, USA