

Recombinant Human CDC2 Protein, GST-Tagged

Cat. No. CDC2-0904H Lot. No. (See product label)

SPECIFICATION

Product Overview	Human CDC2 full-length ORF (AAH14563, 1 a.a. - 297 a.a.) recombinant protein with GST-tag at N-terminal.
Species	Human
Source	Wheat Germ
Description	<p>The protein encoded by this gene is a member of the Ser/Thr protein kinase family. This protein is a catalytic subunit of the highly conserved protein kinase complex known as M-phase promoting factor (MPF), which is essential for G1/S and G2/M phase transitions of eukaryotic cell cycle. Mitotic cyclins stably associate with this protein and function as regulatory subunits. The kinase activity of this protein is controlled by cyclin accumulation and destruction through the cell cycle. The phosphorylation and dephosphorylation of this protein also play important regulatory roles in cell cycle control. Alternatively spliced transcript variants encoding different isoforms have been found for this gene. [provided by RefSeq, Mar 2009]</p>
Molecular Mass	58.41 kDa
AA Sequence	<p>MEDYTKIEKIGEGTYGVVYKGRHKTTGQVVAMKKIRLESEEEGVPSTAIRESLLKEL RHPNIVSLQDVLMQDSRLYLIFEFLSMDLKKYLDSPPGQYMDSSLVKSYLYQILQGIV FCHSRRVLHRDLKPQNLLIDDKGTIKLADFGFLARAFGIPIRVYTHEVVTLWYRSPEVLL GSARYSTPVDIWSIGTIFAELATKKPLFHGDSEIDQLFRIFRALGTPNNEVWPEVESL QDYKNTFPKWKPGSLASHVKNLDENGLDLLSKMLIYDPAKRISGKMALNHPYFNLDL</p>

 Tel: 1-631-559-9269 1-516-512-3133

 Email: info@creative-biomart.com  Fax: 1-631-938-8127

 45-1 Ramsey Road, Shirley, NY 11967, USA

	NQIKKM
Applications	Enzyme-linked Immunoabsorbent Assay Western Blot (Recombinant protein) Antibody Production Protein Array
Storage	Store at -80 centigrade. Aliquot to avoid repeated freezing and thawing.
Storage Buffer	50 mM Tris-HCl, 10 mM reduced Glutathione, pH=8.0 in the elution buffer.
GENE INFORMATION	
Gene Name	CDK1 cyclin dependent kinase 1 [Homo sapiens (human)]
Official Symbol	CDC2
Synonyms	CDK1; cyclin dependent kinase 1; CDC2; CDC28A; P34CDC2; cyclin-dependent kinase 1; cell cycle controller CDC2; cell division control protein 2 homolog; cell division cycle 2, G1 to S and G2 to M; cell division protein kinase 1; p34 protein kinase; EC 2.7.11.22; EC 2.7.11.23; Cyclin Dependent Kinase 1; Cell Division Cycle 2, G1 To S And G2 To M; Cell Division Control Protein 2 Homolog; Cell Division Protein Kinase 1; P34 Protein Kinase; Cell Cycle Controller CDC2; Cyclin-Dependent Kinase 1
Gene ID	983
mRNA Refseq	NM_001170406
Protein Refseq	NP_001163877

 Tel: 1-631-559-9269 1-516-512-3133

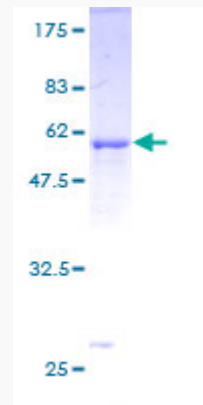
 Email: info@creative-biomart.com  Fax: 1-631-938-8127

 45-1 Ramsey Road, Shirley, NY 11967, USA

MIM 116940

UniProt ID P06493

**Quality Control
Testing**



12.5% SDS-PAGE Stained with Coomassie Blue.

 Tel: 1-631-559-9269 1-516-512-3133

 Email: info@creative-biomart.com  Fax: 1-631-938-8127

 45-1 Ramsey Road, Shirley, NY 11967, USA