

Active Recombinant Human CDC2 Protein, GST-His-Tagged

Cat. No. CDC2-0907H Lot. No. (See product label)

SPECIFICATION

Product Overview	Human CDC2 (NP_001777.1, 1 a.a. - 297 a.a.) and CCNB1 (NP_114172.1, 1 a.a.-433 a.a.) recombinant protein with GST-His tag tag expressed in Sf9 cells.
Species	Human
Source	Insect Cells
ProteinLength	1-297;1-433 a.a.
Description	The protein encoded by this gene is a member of the Ser/Thr protein kinase family. This protein is a catalytic subunit of the highly conserved protein kinase complex known as M-phase promoting factor (MPF), which is essential for G1/S and G2/M phase transitions of eukaryotic cell cycle. Mitotic cyclins stably associate with this protein and function as regulatory subunits. The kinase activity of this protein is controlled by cyclin accumulation and destruction through the cell cycle. The phosphorylation and dephosphorylation of this protein also play important regulatory roles in cell cycle control. Alternatively spliced transcript variants encoding different isoforms have been found for this gene. [provided by RefSeq, Mar 2009]
Form	Liquid
Bio-activity	66 pmol/μg x min
Molecular Mass	CCNB1: 63.882, CCNB kDa

 Tel: 1-631-559-9269 1-516-512-3133

 Email: info@creative-biomart.com  Fax: 1-631-938-8127

 45-1 Ramsey Road, Shirley, NY 11967, USA

Applications	Functional Study SDS-PAGE
Storage	Store at -80 centigrade. Aliquot to avoid repeated freezing and thawing
Concentration	0.110 µg/µL
Storage Buffer	In 50 mM Tris-HCl, 100 mM NaCl, pH 8.0. (5 mM DTT, 4 mM reduced glutathione, 20% glycerol)

GENE INFORMATION

Gene Name	CDK1 cyclin dependent kinase 1 [Homo sapiens (human)]
Official Symbol	CDC2
Synonyms	CDK1; cyclin dependent kinase 1; CDC2; CDC28A; P34CDC2; cyclin-dependent kinase 1; cell cycle controller CDC2; cell division control protein 2 homolog; cell division cycle 2, G1 to S and G2 to M; cell division protein kinase 1; p34 protein kinase; EC 2.7.11.22; EC 2.7.11.23; Cyclin Dependent Kinase 1; Cell Division Cycle 2, G1 To S And G2 To M; Cell Division Control Protein 2 Homolog; Cell Division Protein Kinase 1; P34 Protein Kinase; Cell Cycle Controller CDC2; Cyclin-Dependent Kinase 1
Gene ID	983
mRNA Refseq	NM_001170406
Protein Refseq	NP_001163877
MIM	116940

 Tel: 1-631-559-9269 1-516-512-3133

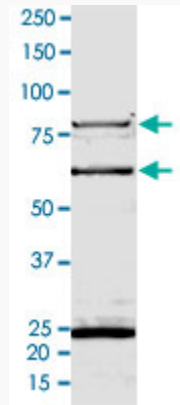
 Email: info@creative-biomart.com  Fax: 1-631-938-8127

 45-1 Ramsey Road, Shirley, NY 11967, USA

UniProt ID

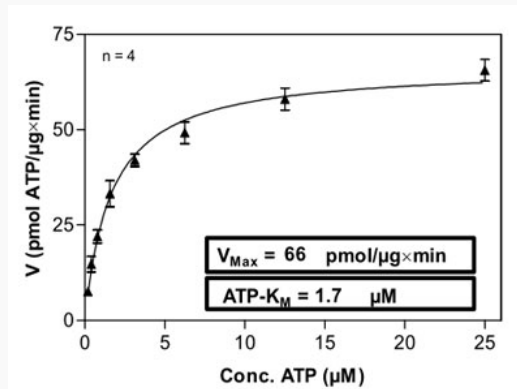
P06493

Quality Control
Testing



2 µg/lane SDS-PAGE Stained with Coomassie Blue

Result of activity
analysis



Tel: 1-631-559-9269 1-516-512-3133

Email: info@creative-biomart.com Fax: 1-631-938-8127

45-1 Ramsey Road, Shirley, NY 11967, USA