

Recombinant Human CDC20 Protein, GST-Tagged

Cat. No. CDC20-0910H Lot. No. (See product label)

SPECIFICATION

Product Overview	Human CDC20 full-length ORF (AAH00624.1, 1 a.a. - 499 a.a.) recombinant protein with GST-tag at N-terminal.
Species	Human
Source	Wheat Germ
Description	CDC20 appears to act as a regulatory protein interacting with several other proteins at multiple points in the cell cycle. It is required for two microtubule-dependent processes, nuclear movement prior to anaphase and chromosome separation. [provided by RefSeq, Jul 2008]
Molecular Mass	81.2 kDa
AA Sequence	<p>MAQFAFESDLHSLQLDAPIPNAPPARWQRKAKEAAGPAPSPMRAANRSHSAGRT PGRTPGKSSSKVQTTPSKPGGDRYIPHRSAQMEVASFLLSKENQPENSQTPTKKE HQKAWVLNNGFDVVEAKILRLSGKPNAPQNAPEGYQNRKLVLYSQKATPGSSRKTCRY IPSLPDRILDAPEIRNDYYLNLVDWSSGNVLAVALDNSVYLWSASSGDILQLLQMEQP GEYISSVAWIKEGNYLAVGTSSAEVQLWDVQQQKRLRNMTSHSARVGSLSWNSYIL SSGSRSGHIHHHDV RVAEHHVATLSGHSQEVCGLRWAPDGRHLASGGNDNLVNV WPSAPGEGGWVPLQTFTQHQGAVKAWWCPWQSNVLATGGGTSDRHIRIWNVCS GACLSAVDAHSQVCSILWSPHYKELISGHGFAQNQLVIWKYPTMAKVAELKGHTSR VLSLTMSPDGATVASAAADETLRLWRCFELDPARRREREKASAAKSSLIHQGIR</p>
Applications	Enzyme-linked Immunoabsorbent Assay

 Tel: 1-631-559-9269 1-516-512-3133

 Email: info@creative-biomart.com  Fax: 1-631-938-8127

 45-1 Ramsey Road, Shirley, NY 11967, USA

Western Blot (Recombinant protein)
 Antibody Production
 Protein Array

Storage Store at -80 centigrade. Aliquot to avoid repeated freezing and thawing.

Storage Buffer 50 mM Tris-HCl, 10 mM reduced Glutathione, pH=8.0 in the elution buffer.

GENE INFORMATION

Gene Name CDC20 cell division cycle 20 homolog (*S. cerevisiae*) [*Homo sapiens*]

Official Symbol CDC20

Synonyms CDC20; cell division cycle 20 homolog (*S. cerevisiae*); CDC20 (cell division cycle 20, *S. cerevisiae*, homolog), CDC20 cell division cycle 20 homolog (*S. cerevisiae*); cell division cycle protein 20 homolog; CDC20A; p55CDC; CDC20 cell division cycle 20 homolog; bA276H19.3; MGC102824;

Gene ID 991

mRNA Refseq NM_001255

Protein Refseq NP_001246

MIM 603618

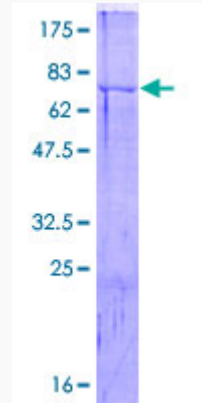
UniProt ID Q12834

 Tel: 1-631-559-9269 1-516-512-3133

 Email: info@creative-biomart.com  Fax: 1-631-938-8127

 45-1 Ramsey Road, Shirley, NY 11967, USA

**Quality Control
Testing**



12.5% SDS-PAGE Stained with Coomassie Blue.

 Tel: 1-631-559-9269 1-516-512-3133

 Email: info@creative-biomart.com  Fax: 1-631-938-8127

 45-1 Ramsey Road, Shirley, NY 11967, USA