

Recombinant Full Length Human CDC20 Protein, C-Flag-tagged

Cat. No. CDC20-1042HFL **Lot. No.** (See product label)

SPECIFICATION

Product Overview	Recombinant Full Length Human CDC20 Protein, fused to Flag-tag at C-terminus, was expressed in Mammalian cells.
Species	Human
Source	Mammalian Cells
Description	CDC20 appears to act as a regulatory protein interacting with several other proteins at multiple points in the cell cycle. It is required for two microtubule-dependent processes, nuclear movement prior to anaphase and chromosome separation.
Form	25 mM Tris HCl, pH 7.3, 100 mM glycine, 10% glycerol.
Molecular Mass	54.5 kDa
AA Sequence	<p>MAQFAFESDLHSLQLDAPIPNAPPARWQRKAKEAAGPAPSPMRAANRSHSAGRT PGRTPGKSSSKVQTT PSKPGGDRYIPHRSAQMEVASFLLSKENQPENSQTPTKK EHQKAWALNLNGFDVEEAKILRLSGKPQNA PEGYQNRLLKVLVSQKATPGSSRKT RYIPSLPDRILDAPEIRNDYYLNLVDWSSGNVLAVALDNSVYLWS ASSGDILQLLQM EQPGEYISSVAWIKEGNYLAVGTSSAEVQLWDVQQQKRLRNMTSHSARVGSLSWN SYI LSSGSRSGHIHHHDVRVAEHHVATLSGHSQEVCGLRWAPDGRHLASGGNDNL VNVWPSAPGEGGWVPLQT FTQHQGAVKAVAWCPWQSNVLATGGGTSDRHIRIW NVCSGACLSAVDAHSQVCSILWSPHYKELISGHGF AQNQLVIWKYPTMAKVAELKG HTSRVLSLTMSPDGATVASAAADETLRLWRCFELDPARRREREKASAAK</p>

 Tel: 1-631-559-9269 1-516-512-3133

 Email: info@creative-biomart.com  Fax: 1-631-938-8127

 45-1 Ramsey Road, Shirley, NY 11967, USA

SSLIHQGIRTRTRPLEQKLISEEDLAANDILDYKDDDDKV

Purity > 80% as determined by SDS-PAGE and Coomassie blue staining.

Stability Stable for 12 months from the date of receipt of the product under proper storage and handling conditions. Avoid repeated freeze-thaw cycles.

Storage Store at -80 centigrade.

Concentration >50 ug/mL as determined by microplate BCA method.

Preparation Recombinant protein was captured through anti-DDK affinity column followed by conventional chromatography steps.

Protein Families Druggable Genome

Protein Pathways Cell cycle, Oocyte meiosis, Ubiquitin mediated proteolysis

Full Length Full L.

GENE INFORMATION

Gene Name [CDC20 cell division cycle 20 \[Homo sapiens \(human\) \]](#)

Official Symbol [CDC20](#)

Synonyms CDC20A; p55CDC; bA276H19.3

Gene ID [991](#)

mRNA Refseq [NM_001255.3](#)

 Tel: 1-631-559-9269 1-516-512-3133

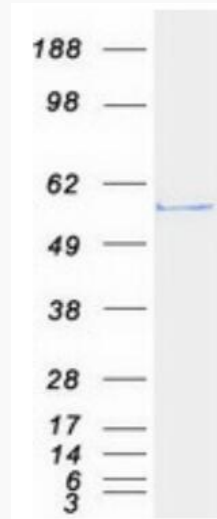
 Email: info@creative-biomart.com  Fax: 1-631-938-8127

 45-1 Ramsey Road, Shirley, NY 11967, USA

Protein Refseq [NP_001246.2](#)

MIM [603618](#)

UniProt ID [Q12834](#)



Coomassie blue staining of purified CDC20 protein.

 Tel: 1-631-559-9269 1-516-512-3133

 Email: info@creative-biomart.com  Fax: 1-631-938-8127

 45-1 Ramsey Road, Shirley, NY 11967, USA