

Recombinant Human CDC20 Protein, His-tagged

Cat. No. CDC20-715H Lot. No. (See product label)

SPECIFICATION

Product Overview	Recombinant Human CDC20 Protein (Gln218-Arg471) with His tag was expressed in E. coli.
Species	Human
Source	E.coli
ProteinLength	Gln218-Arg471
Description	CDC20 appears to act as a regulatory protein interacting with several other proteins at multiple points in the cell cycle. It is required for two microtubule-dependent processes, nuclear movement prior to anaphase and chromosome separation.
Form	Freeze-dried powder
Molecular Mass	Predicted Molecular Mass: 31.4 kDa; Accurate Molecular Mass: 30 kDa
Purity	> 90%
Applications	Positive Control; Immunogen; SDS-PAGE; WB.
Stability	The thermal stability is described by the loss rate. The loss rate was determined by accelerated thermal degradation test, that is, incubate the protein at 37 centigrade for 48h, and no obvious degradation and precipitation were observed. The loss rate is less than 5% within the expiration date under appropriate storage condition.

 Tel: 1-631-559-9269 1-516-512-3133

 Email: info@creative-biomart.com  Fax: 1-631-938-8127

 45-1 Ramsey Road, Shirley, NY 11967, USA

Storage	Avoid repeated freeze/thaw cycles. Store at 2-8 centigrade for one month. Aliquot and store at -80 centigrade for 12 months.
Storage Buffer	20mM Tris, 150mM NaCl, pH8.0, containing 1mM EDTA, 1mM DTT, 0.01% SKL, 5% Trehalose and Proclin300.
Reconstitution	Reconstitute in 20mM Tris, 150mM NaCl (pH8.0) to a concentration of 0.1-1.0 mg/mL. Do not vortex.

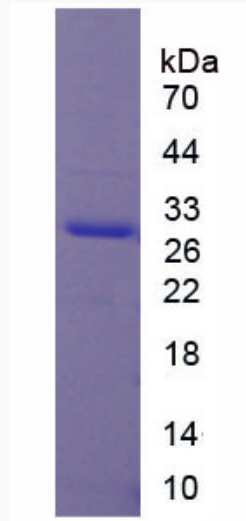
GENE INFORMATION

Gene Name	CDC20 cell division cycle 20 homolog (<i>S. cerevisiae</i>) [<i>Homo sapiens</i> (human)]
Official Symbol	CDC20
Synonyms	CDC20; cell division cycle 20 homolog (<i>S. cerevisiae</i>); CDC20 (cell division cycle 20, <i>S. cerevisiae</i> , homolog), CDC20 cell division cycle 20 homolog (<i>S. cerevisiae</i>); cell division cycle protein 20 homolog; CDC20A; p55CDC; CDC20 cell division cycle 20 homolog; bA276H19.3; MGC102824;
Gene ID	991
mRNA Refseq	NM_001255
Protein Refseq	NP_001246
MIM	603618
UniProt ID	Q12834

 Tel: 1-631-559-9269 1-516-512-3133

 Email: info@creative-biomart.com  Fax: 1-631-938-8127

 45-1 Ramsey Road, Shirley, NY 11967, USA



Tel: 1-631-559-9269 1-516-512-3133

Email: info@creative-biomart.com Fax: 1-631-938-8127

45-1 Ramsey Road, Shirley, NY 11967, USA