

Recombinant Human CDC25B Protein, GST-Tagged

Cat. No. CDC25B-0916H Lot. No. (See product label)

SPECIFICATION

Product Overview	Human CDC25B full-length ORF (AAH06395, 43 a.a. - 580 a.a.) recombinant protein with GST-tag at N-terminal.
Species	Human
Source	Wheat Germ
Description	CDC25B is a member of the CDC25 family of phosphatases. CDC25B activates the cyclin dependent kinase CDC2 by removing two phosphate groups and it is required for entry into mitosis. CDC25B shuttles between the nucleus and the cytoplasm due to nuclear localization and nuclear export signals. The protein is nuclear in the M and G1 phases of the cell cycle and moves to the cytoplasm during S and G2. CDC25B has oncogenic properties, although its role in tumor formation has not been determined. Multiple transcript variants for this gene exist. [provided by RefSeq, Jul 2008]
Molecular Mass	84.92 kDa
AA Sequence	PVRAAASSPVTTLTQTMHDLAAGLGSETPKSQVGTLLFRSRRLTHLSLSRRASESSL SSESSSESSDAGLCMDSPSPMDPHMAEQTFEQAIQAASRIIRNEQFAIRRFQSMPVRL LGHSPLVRNITNSQAPDGRKSEAGSGAASSSGEDKENDGFVFKMPWKPTHPSST HALAEWASRREAFAQRPSSAPDLMCLSPDRKMEVEELSPLALGRFSLTPAEGDTEE DDGFVDILESDLKDDDAVPPGMESLISAPLVKTKLEKEEEKDLVMYSKQCQLFRSPSM PCSVIRPILKRLERPQDRDTPVQNKRRRSVTPPEEQQEAEKPKARVLRSLKSLCHDEI

 Tel: 1-631-559-9269 1-516-512-3133

 Email: info@creative-biomart.com  Fax: 1-631-938-8127

 45-1 Ramsey Road, Shirley, NY 11967, USA

ENLLDSDHRELIGDYSKAFLLQTVDGKHQDLKYISPETMVALLTGKFSNIVDKFVIVDC
 RYPYEYEGGHIKTAVNPLERDAESFLLKSPIAPCSLDRVILIFHCEFSSERGPRMC
 RFIRERDRAVNDYPSLYPEMYILKGGYKEFFPQHPNFCEPQDYRPMNHEAFKDEL
 KTFRLKTRSWAGERSRRELCSRLQDQ

Applications	Enzyme-linked Immunoabsorbent Assay Western Blot (Recombinant protein) Antibody Production Protein Array
Storage	Store at -80 centigrade. Aliquot to avoid repeated freezing and thawing.
Storage Buffer	50 mM Tris-HCl, 10 mM reduced Glutathione, pH=8.0 in the elution buffer.

GENE INFORMATION

Gene Name	CDC25B cell division cycle 25 homolog B (S. pombe) [Homo sapiens]
Official Symbol	CDC25B
Synonyms	CDC25B; cell division cycle 25 homolog B (S. pombe); cell division cycle 25 homolog B (S. cerevisiae), cell division cycle 25B; M-phase inducer phosphatase 2; cell division cycle 25B; dual specificity phosphatase Cdc25B;
Gene ID	994
mRNA Refseq	NM_004358
Protein Refseq	NP_004349
MIM	116949

 Tel: 1-631-559-9269 1-516-512-3133

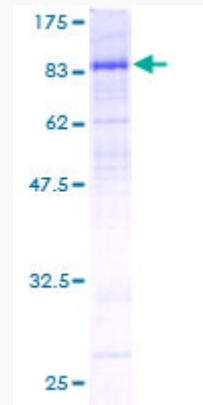
 Email: info@creative-biomart.com  Fax: 1-631-938-8127

 45-1 Ramsey Road, Shirley, NY 11967, USA

UniProt ID

P30305

Quality Control
Testing



12.5% SDS-PAGE Stained with Coomassie Blue.

 Tel: 1-631-559-9269 1-516-512-3133

 Email: info@creative-biomart.com  Fax: 1-631-938-8127

 45-1 Ramsey Road, Shirley, NY 11967, USA