

Recombinant Human CDC25C Protein, GST-Tagged

Cat. No. CDC25C-0918H Lot. No. (See product label)

SPECIFICATION

Product Overview	Human CDC25C full-length ORF (AAH19089.1, 1 a.a. - 473 a.a.) recombinant protein with GST-tag at N-terminal.
Species	Human
Source	Wheat Germ
Description	This gene encodes a conserved protein that plays a key role in the regulation of cell division. The encoded protein directs dephosphorylation of cyclin B-bound CDC2 and triggers entry into mitosis. It also suppresses p53-induced growth arrest. Multiple alternatively spliced transcript variants of this gene have been described. [provided by RefSeq, Dec 2015]
Molecular Mass	79.7 kDa
AA Sequence	MSTELFSSTREEGSSGSGPSFRSNQRKMLNLLERDTSFTVCPDVPRTTPVGKFLGD SANLSILSGGTPKCCLDLSNLSSGEITATQLTTSADLDETGHLDSSGLQEVHLAGMN HDQHLMKCSPAQLLCSTPNGLDRGHRKRDAMCSSSANKENDNGNLVDSEMKYLG SPITTVPKLDKNPNLGEDQAEIISDELMEFSLKDQEAQVSRSGLYRSPSPENLNRP RLKQVEKFKDNTIPDKVKKKYFSGQGKLRKGLCLKKTVSLCDITITQMLEEDSNQGH LIGDFSVCALPTVSGKHQDLKYVNPETVAALLSGKFQGLIEKFYVIDCRYPYEYLG HIQGALNLYSQEELFNFFLKKPIVPLDTQKRIIIIVFHCFSSERGPRMCRCLREEDRSL NQYPALYYPELYILKGGYRDFPEYMELCPEQSYCPMHHDHKTLLRCRSQSKVQ EGERQLREQIALLVKDMSP

 Tel: 1-631-559-9269 1-516-512-3133

 Email: info@creative-biomart.com  Fax: 1-631-938-8127

 45-1 Ramsey Road, Shirley, NY 11967, USA

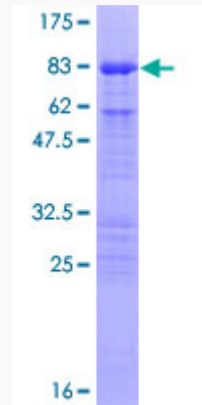
Applications	Enzyme-linked Immunoabsorbent Assay Western Blot (Recombinant protein) Antibody Production Protein Array
Storage	Store at -80 centigrade. Aliquot to avoid repeated freezing and thawing.
Storage Buffer	50 mM Tris-HCl, 10 mM reduced Glutathione, pH=8.0 in the elution buffer.
GENE INFORMATION	
Gene Name	CDC25C cell division cycle 25 homolog C (<i>S. pombe</i>) [<i>Homo sapiens</i>]
Official Symbol	CDC25C
Synonyms	CDC25C; cell division cycle 25 homolog C (<i>S. pombe</i>); CDC25, cell division cycle 25 homolog C (<i>S. cerevisiae</i>), cell division cycle 25C; M-phase inducer phosphatase 3; PPP1R60; protein phosphatase 1; regulatory subunit 60; mitosis inducer CDC25; cell division cycle 25C; phosphotyrosine phosphatase; dual specificity phosphatase CDC25C; protein phosphatase 1, regulatory subunit 60; CDC25;
Gene ID	995
mRNA Refseq	NM_001790
Protein Refseq	NP_001781
MIM	157680
UniProt ID	P30307

 Tel: 1-631-559-9269 1-516-512-3133

 Email: info@creative-biomart.com  Fax: 1-631-938-8127

 45-1 Ramsey Road, Shirley, NY 11967, USA

**Quality Control
Testing**



12.5% SDS-PAGE Stained with Coomassie Blue.

 Tel: 1-631-559-9269 1-516-512-3133

 Email: info@creative-biomart.com  Fax: 1-631-938-8127

 45-1 Ramsey Road, Shirley, NY 11967, USA