

## Recombinant Human CDC25C Protein, Flag tagged

Cat. No. CDC25C-1576H Lot. No. (See product label)

### SPECIFICATION

|                         |  |
|-------------------------|--|
| <b>Product Overview</b> | Recombinant protein of human cell division cycle 25 homolog C ( <i>S. pombe</i> ) (CDC25C), transcript variant 1 with C-Flag tag was expressed in HEK293T.   |
| <b>Species</b>          | Human  |
| <b>Source</b>           | HEK293T  |
| <b>Description</b>      | This gene encodes a conserved protein that plays a key role in the regulation of cell division. The encoded protein directs dephosphorylation of cyclin B-bound CDC2 and triggers entry into mitosis. It also suppresses p53-induced growth arrest. Multiple alternatively spliced transcript variants of this gene have been described. |
| <b>Molecular Mass</b>   | 53.2 kDa   |
| <b>Purity</b>           | > 80% as determined by SDS-PAGE and Coomassie blue staining  |
| <b>Note</b>             | For testing in cell culture applications, please filter before use. Note that you may experience some loss of protein during the filtration process.   |
| <b>Stability</b>        | Stable for 12 months from the date of receipt of the product under proper storage and handling conditions. Avoid repeated freeze-thaw cycles.  |
| <b>Storage</b>          | Store at -80 centigrade.   |
| <b>Storage Buffer</b>   | 25 mM Tris-HCl, 100 mM glycine, pH 7.3, 10% glycerol   |

 Tel: 1-631-559-9269 1-516-512-3133

 Email: [info@creative-biomart.com](mailto:info@creative-biomart.com)  Fax: 1-631-938-8127

 45-1 Ramsey Road, Shirley, NY 11967, USA

**Concentration** > 0.05 µg/µL as determined by microplate BCA method

**Shipping** Dry Ice

## GENE INFORMATION

**Gene Name** [CDC25C cell division cycle 25 homolog C \(S. pombe\) \[ Homo sapiens \(human\) \]](#)

**Official Symbol** [CDC25C](#)

**Synonyms**

CDC25C; cell division cycle 25 homolog C (S. pombe); CDC25, cell division cycle 25 homolog C (S. cerevisiae) , cell division cycle 25C; M-phase inducer phosphatase 3; PPP1R60; protein phosphatase 1; regulatory subunit 60; mitosis inducer CDC25; cell division cycle 25C; phosphotyrosine phosphatase; dual specificity phosphatase CDC25C; protein phosphatase 1, regulatory subunit 60; CDC25

**Gene ID** [995](#)

**mRNA Refseq** [NM\\_001790](#)

**Protein Refseq** [NP\\_001781](#)

**MIM** [157680](#)

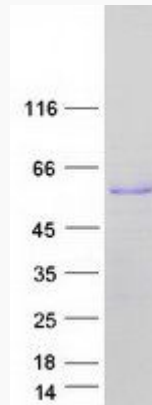
**UniProt ID** [P30307](#)

 Tel: 1-631-559-9269 1-516-512-3133

 Email: [info@creative-biomart.com](mailto:info@creative-biomart.com)  Fax: 1-631-938-8127

 45-1 Ramsey Road, Shirley, NY 11967, USA

**SDS-PAGE**



 Tel: 1-631-559-9269 1-516-512-3133

 Email: [info@creative-biomart.com](mailto:info@creative-biomart.com)  Fax: 1-631-938-8127

 45-1 Ramsey Road, Shirley, NY 11967, USA