

# Recombinant Human CDC26 Protein, Myc/DDK-tagged, C13 and N15-labeled

**Cat. No.** CDC26-4328H    **Lot. No.** (See product label)

## SPECIFICATION

<b>Product Overview</b>	CDC26 MS Standard C13 and N15-labeled recombinant protein (NP_644815) with a C-terminal MYC/DDK tag, was expressed in HEK293 cells.
<b>Species</b>	Human
<b>Source</b>	HEK293
<b>Description</b>	The protein encoded by this gene is highly similar to <i>Saccharomyces cerevisiae</i> Cdc26, a component of cell cycle anaphase-promoting complex (APC). APC is composed of a group of highly conserved proteins and functions as a cell cycle-regulated ubiquitin-protein ligase. APC thus is responsible for the cell cycle regulated proteolysis of various proteins.
<b>Molecular Mass</b>	9.8 kDa
<b>AA Sequence</b>	MLRRKPTRLELKLDDIEEFENIRKDLLETRKKQKEDVEVVGSDGEGAIGLSSDPKSR EQMINDRIGYKPKPKPNNRSSQFGSLEFTRTRPLEQKLISEEDLAANDILDYKDDDD KV
<b>Purity</b>	> 80% as determined by SDS-PAGE and Coomassie blue staining
<b>Stability</b>	Stable for 3 months from receipt of products under proper storage and handling conditions.

 Tel: 1-631-559-9269    1-516-512-3133

 Email: [info@creative-biomart.com](mailto:info@creative-biomart.com)     Fax: 1-631-938-8127

 45-1 Ramsey Road, Shirley, NY 11967, USA

<b>Storage</b>	Store at -80 centigrade. Avoid repeated freeze-thaw cycles.
<b>Concentration</b>	50 µg/mL as determined by BCA
<b>Storage Buffer</b>	100 mM glycine, 25 mM Tris-HCl, pH 7.3.
<b>GENE INFORMATION</b>	
<b>Gene Name</b>	CDC26 cell division cycle 26 [ Homo sapiens (human) ]
<b>Official Symbol</b>	CDC26
<b>Synonyms</b>	CDC26; cell division cycle 26 homolog (S. cerevisiae); C9orf17, cell division cycle 26, chromosome 9 open reading frame 17; anaphase-promoting complex subunit CDC26; ANAPC12; anaphase promoting complex subunit 12; APC12; CDC26 subunit of anaphase promoting complex; anaphase-promoting complex subunit 12; cell division cycle protein 26 homolog; C9orf17;
<b>Gene ID</b>	246184
<b>mRNA Refseq</b>	NM_139286
<b>Protein Refseq</b>	NP_644815
<b>MIM</b>	614533
<b>UniProt ID</b>	Q8NHZ8

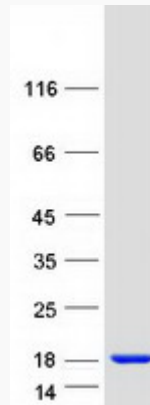
 Tel: 1-631-559-9269 1-516-512-3133

 Email: [info@creative-biomart.com](mailto:info@creative-biomart.com)  Fax: 1-631-938-8127

 45-1 Ramsey Road, Shirley, NY 11967, USA



SDS-PAGE



Tel: 1-631-559-9269 1-516-512-3133

Email: [info@creative-biomart.com](mailto:info@creative-biomart.com) Fax: 1-631-938-8127

45-1 Ramsey Road, Shirley, NY 11967, USA