

## Recombinant Human CDC27 protein, His & T7-tagged

Cat. No. CDC27-1271H Lot. No. (See product label)

### SPECIFICATION

<b>Product Overview</b>	Recombinant Human CDC27 aa. (Asn17~Ser231 (Accession # P30260) fused with N-terminal His & T7 tag was produced in E. coli cells.
<b>Species</b>	Human
<b>Source</b>	E.coli
<b>ProteinLength</b>	Asn17~Ser231
<b>Description</b>	<p>The protein encoded by this gene shares strong similarity with <i>Saccharomyces cerevisiae</i> protein Cdc27, and the gene product of <i>Schizosaccharomyces pombe</i> nuc 2. This protein is a component of the anaphase-promoting complex (APC), which is composed of eight protein subunits and is highly conserved in eukaryotic cells. This complex catalyzes the formation of cyclin B-ubiquitin conjugate, which is responsible for the ubiquitin-mediated proteolysis of B-type cyclins. The protein encoded by this gene and three other members of the APC complex contain tetratricopeptide (TPR) repeats, which are important for protein-protein interactions. This protein was shown to interact with mitotic checkpoint proteins including Mad2, p55CDC and BUBR1, and it may thus be involved in controlling the timing of mitosis. Alternative splicing of this gene results in multiple transcript variants. Related pseudogenes have been identified on chromosomes 2, 22 and Y.</p>
<b>Form</b>	Freeze-dried powder
<b>Molecular Mass</b>	Predicted Molecular Mass: 27.9kDa.

 Tel: 1-631-559-9269 1-516-512-3133

 Email: [info@creative-biomart.com](mailto:info@creative-biomart.com)  Fax: 1-631-938-8127

 45-1 Ramsey Road, Shirley, NY 11967, USA

<b>Endotoxin</b>	<1.0EU per 1g (determined by the LAL method)
<b>Purity</b>	>90%
<b>Characteristic</b>	The isoelectric point is 6.
<b>Applications</b>	SDS-PAGE; WB; ELISA; IP.
<b>Stability</b>	The thermal stability is described by the loss rate of the target protein. The loss rate was determined by accelerated thermal degradation test, that is, incubate the protein at 37°C for 48h, and no obvious degradation and precipitation were observed. (Referring from China Biological Products Standard, which was calculated by the Arrhenius equation.) The loss of this protein is less than 5% within the expiration date under appropriate storage condition.
<b>Storage</b>	Avoid repeated freeze/thaw cycles. Store at 2-8°C for one month. Aliquot and store at -80°C for 12 months.
<b>Storage buffer</b>	Supplied as lyophilized form in 20mM Tris, 150mM NaCl, pH8.0, containing 1mM EDTA, 1mM DTT, 0.01% sarcosyl, 5% trehalose, and preservative.
<b>Reconstitution</b>	Reconstitute in sterile ddH <sub>2</sub> O.

## GENE INFORMATION

<b>Gene Name</b>	CDC27 cell division cycle 27 [ Homo sapiens (human) ]
<b>Official Symbol</b>	CDC27
<b>Synonyms</b>	CDC27; cell division cycle 27; APC3; HNUC; NUC2; H-NUC; ANAPC3; CDC27Hs; D0S1430E; D17S978E; cell division cycle protein 27 homolog; anaphase promoting

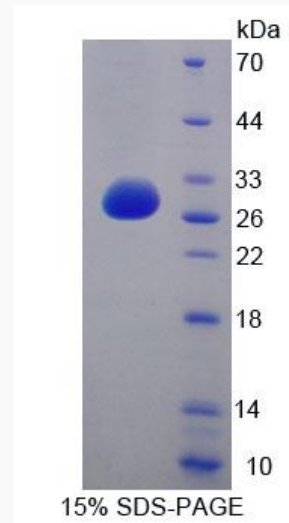
 Tel: 1-631-559-9269 1-516-512-3133

 Email: [info@creative-biomart.com](mailto:info@creative-biomart.com)  Fax: 1-631-938-8127

 45-1 Ramsey Road, Shirley, NY 11967, USA

complex subunit 3; anaphase-promoting complex, protein 3; cell division cycle 27 homolog; nuc2 homolog

Gene ID	996
mRNA Refseq	NM_001114091.3
Protein Refseq	NP_001107563.1
UniProt ID	P30260

**SDS-PAGE**

Tel: 1-631-559-9269 1-516-512-3133

Email: [info@creative-biomart.com](mailto:info@creative-biomart.com) Fax: 1-631-938-8127

45-1 Ramsey Road, Shirley, NY 11967, USA